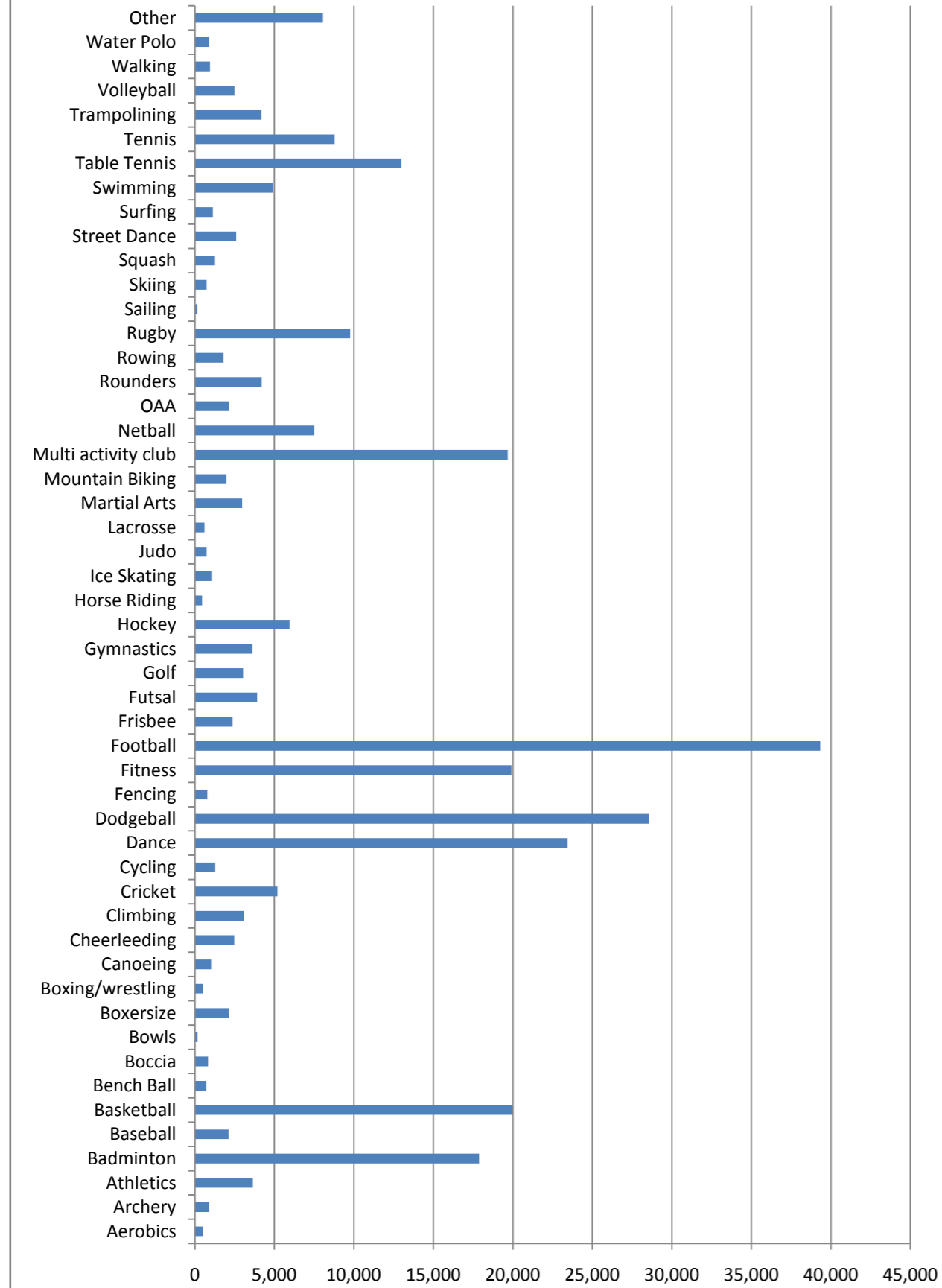
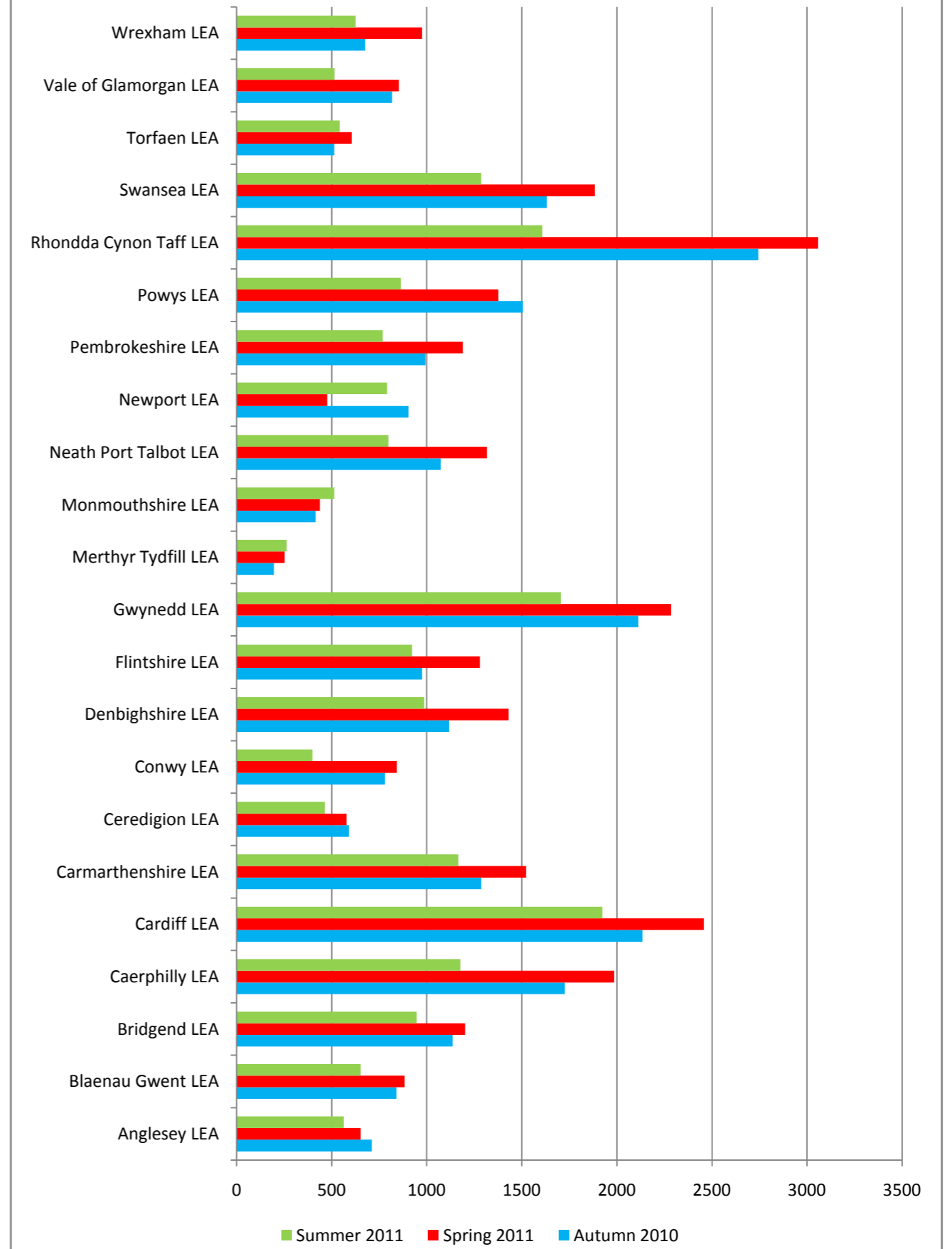


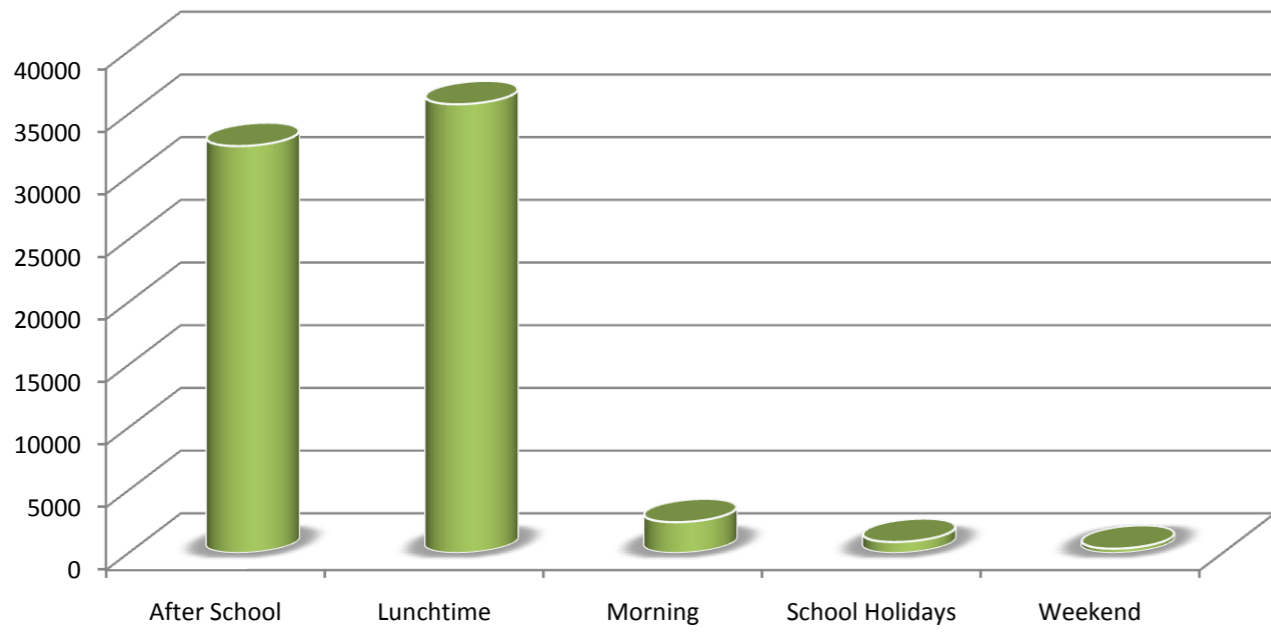
2010-11 Registrations by Activity



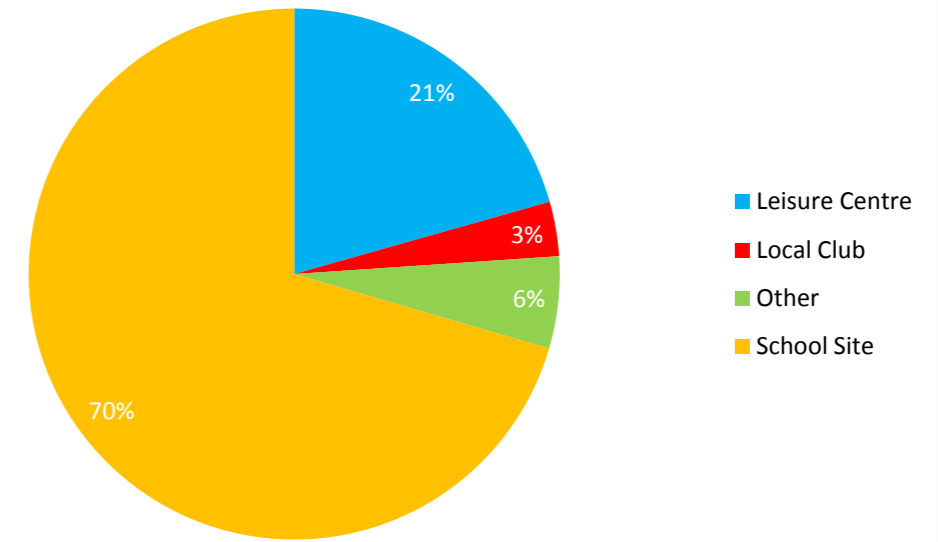
5x60 Sessions Delivered by Term



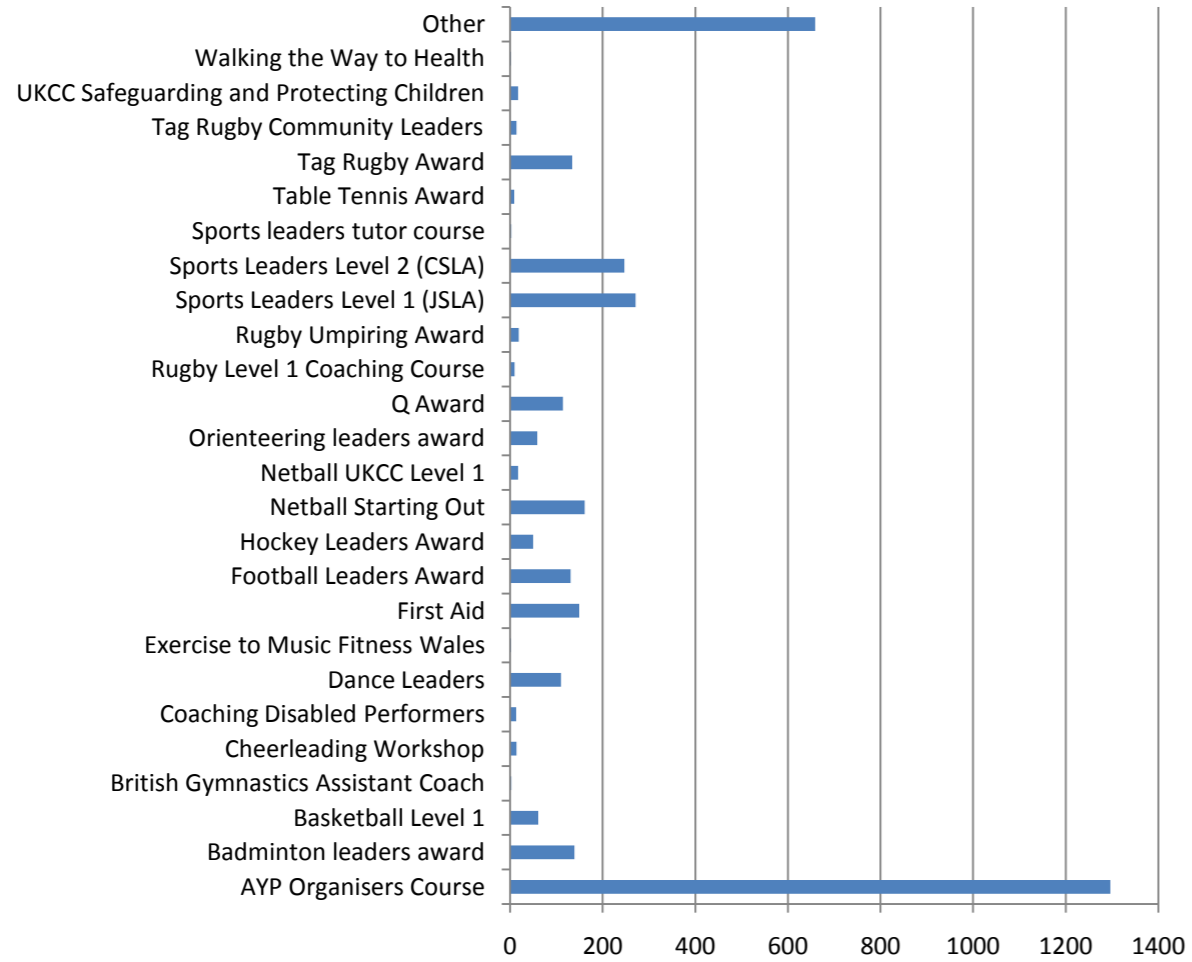
Time of 5X60 Sessions 2010-11



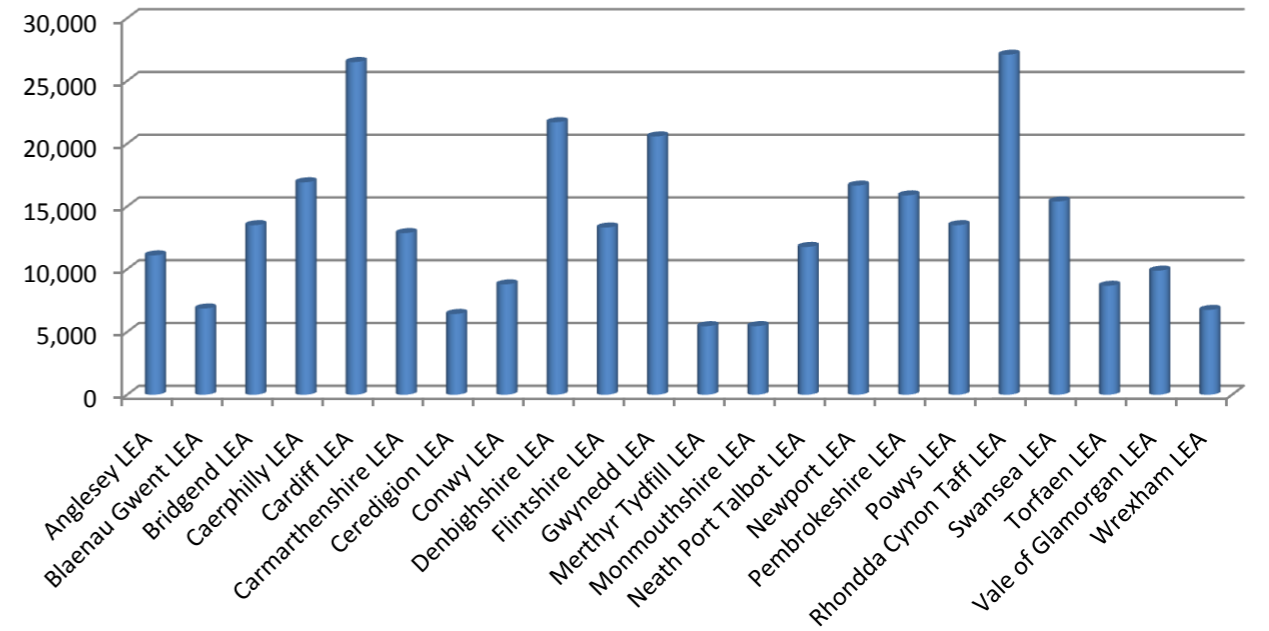
Location of 5x60 Sessions 2010-11



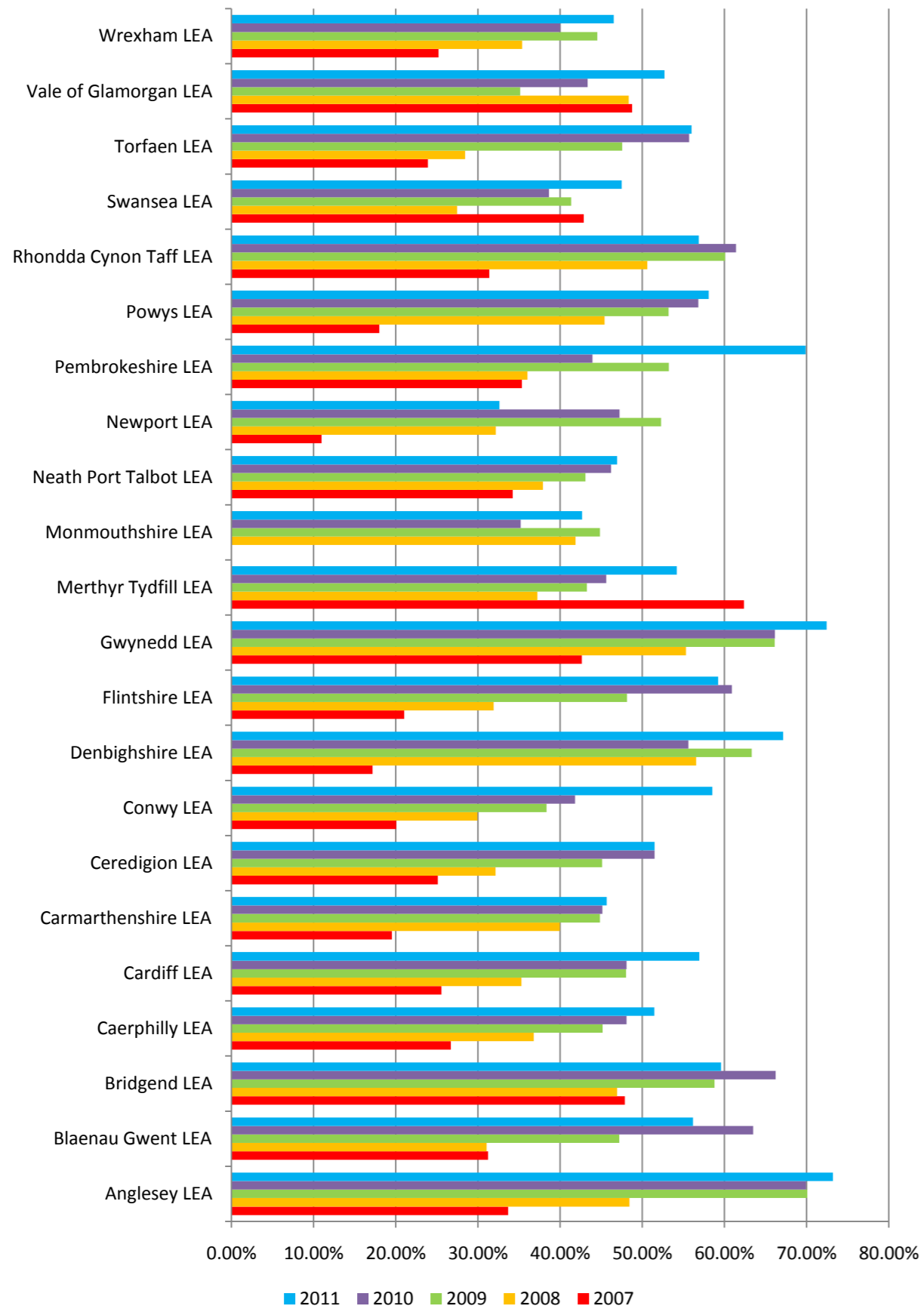
5x60 Training Attendance 2010-11



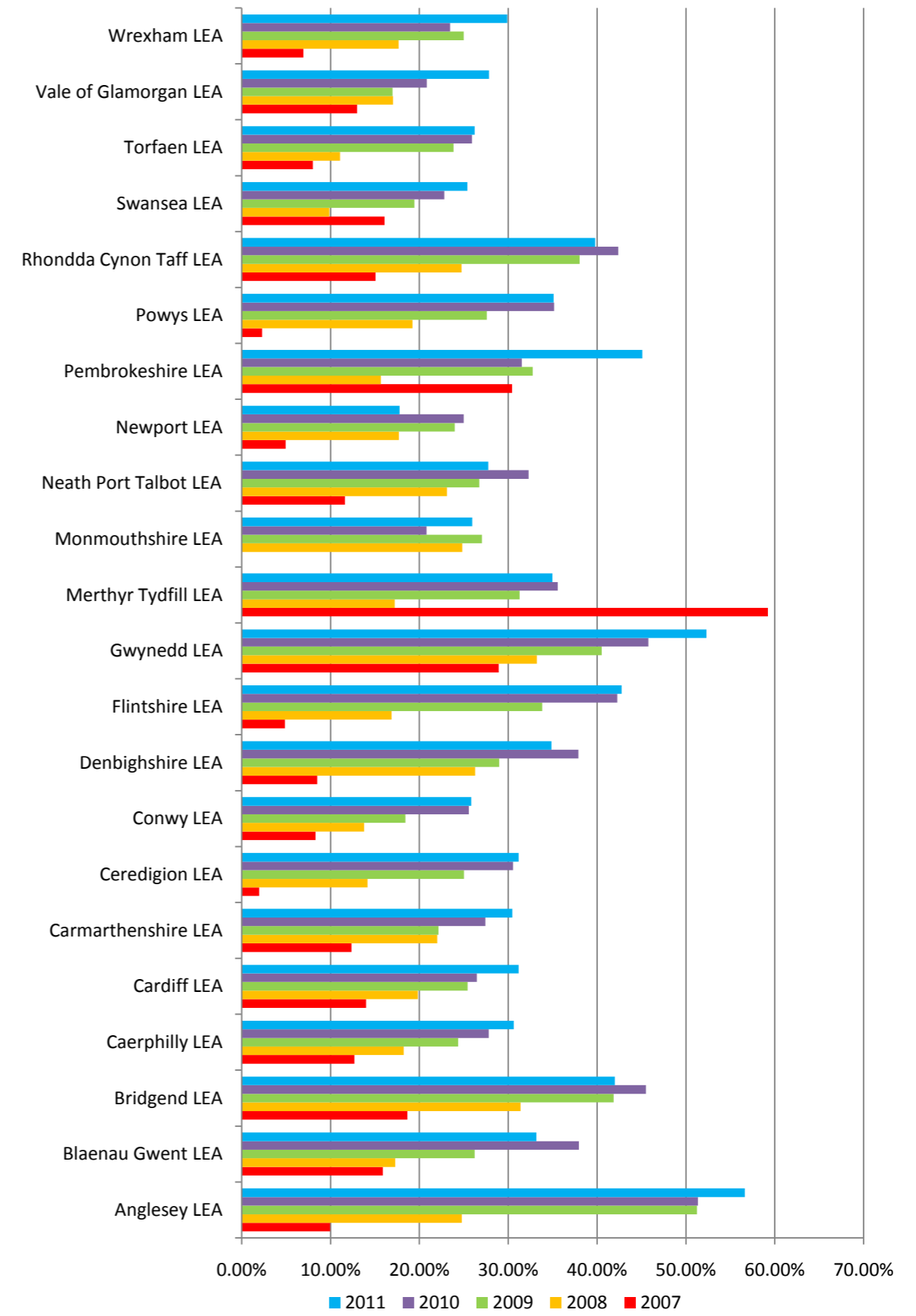
Number of Registrations 2010-11



% of children attending 1 session by Year



% children attending 5 sessions or more by year



Sessions & Registrations 2010-11

Term (Multiple Items)

Registrations								
LA	Number of sessions	Boys KS3	Boys KS4	Girls KS3	Girls KS4	Total Boys	Total Girls	Total Registrations
Anglesey LEA	1,927	5,343	1,749	3,419	594	7,092	4,013	11,105
Blaenau Gwent LEA	2,375	3,398	1,191	1,832	449	4,589	2,281	6,870
Bridgend LEA	3,285	6,324	2,316	3,984	886	8,640	4,870	13,510
Caerphilly LEA	4,889	7,639	1,822	6,109	1,356	9,461	7,465	16,926
Cardiff LEA	6,515	10,073	3,761	10,454	2,222	13,834	12,676	26,510
Carmarthenshire LEA	3,975	5,672	1,859	4,368	981	7,531	5,349	12,880
Ceredigion LEA	1,634	3,705	819	1,608	305	4,524	1,913	6,437
Conwy LEA	2,022	4,467	1,357	2,459	508	5,824	2,967	8,791
Denbighshire LEA	3,535	9,198	2,528	7,920	2,068	11,726	9,988	21,714
Flintshire LEA	3,179	5,608	1,622	4,887	1,206	7,230	6,093	13,323
Gwynedd LEA	6,104	9,240	2,480	7,115	1,745	11,720	8,860	20,580
Merthyr Tydfil LEA	712	2,409	836	1,885	330	3,245	2,215	5,460
Monmouthshire LEA	1,367	2,276	826	1,821	541	3,102	2,362	5,464
Neath Port Talbot LEA	3,189	5,394	1,392	4,240	750	6,786	4,990	11,776
Newport LEA	2,172	8,120	4,138	3,099	1,306	12,258	4,405	16,663
Pembrokeshire LEA	2,952	7,174	2,575	4,627	1,508	9,749	6,135	15,884
Powys LEA	3,746	6,623	1,825	4,029	1,034	8,448	5,063	13,511
Rhondda Cynon Taff LEA	7,409	12,058	3,171	9,785	2,079	15,229	11,864	27,093
Swansea LEA	4,802	5,811	2,224	5,599	1,765	8,035	7,364	15,399
Torfaen LEA	1,662	3,668	939	2,986	1,091	4,607	4,077	8,684
Vale of Glamorgan LEA	2,186	4,835	899	3,502	650	5,734	4,152	9,886
Wrexham LEA	2,278	3,092	959	2,322	386	4,051	2,708	6,759
Grand Total	71,915	132,127	41,288	98,050	23,760	173,415	121,810	295,225

Time of Sessions 2010-11

Term (Multiple Items)
LA (All)

Sessions	Total
Time_Activity	
After School	32451
Lunchtime	35784
Morning	2457
School Holidays	877
Weekend	346
Grand Total	71915

Location of Sessions 2010-11

Term (Multiple Items)
LA (All)

Sessions	Total
Location of session	
Leisure Centre	14820
Local Club	2388
Other	4022
School Site	50685
Grand Total	71915

Session Delivery

Term (Multiple Items)
LA (All)

Sum of Number of sessions	Total
Session Lead	
5X60 Officer	11808
AOTT	1593
HE/FE Studei	1646
None	158
Older pupils	5699
Other club p	337
PE Teacher	4907
Qualified Co:	42038
Sports devel	234
Teacher (Noi	3495
Grand Total	71915

Registrations 2010-11

Term	(Multiple Items)
Total Registrations	
LA	Total
Anglesey LEA	11,105
Blaenau Gwent LEA	6,870
Bridgend LEA	13,510
Caerphilly LEA	16,926
Cardiff LEA	26,510
Carmarthenshire LEA	12,880
Ceredigion LEA	6,437
Conwy LEA	8,791
Denbighshire LEA	21,714
Flintshire LEA	13,323
Gwynedd LEA	20,580
Merthyr Tydfill LEA	5,460
Monmouthshire LEA	5,464
Neath Port Talbot LEA	11,776
Newport LEA	16,663
Pembrokeshire LEA	15,884
Powys LEA	13,511
Rhondda Cynon Taff LEA	27,093
Swansea LEA	15,399
Torfaen LEA	8,684
Vale of Glamorgan LEA	9,886
Wrexham LEA	6,759
Grand Total	295,225

Sessions Delivered by Term

Sessions LA	Term			Grand Total
	Autumn 2010	Spring 2011	Summer 2011	
Anglesey LEA	711	652	564	1927
Blaenau Gwent LEA	840	883	652	2375
Bridgend LEA	1136	1202	947	3285
Caerphilly LEA	1726	1986	1177	4889
Cardiff LEA	2134	2457	1924	6515
Carmarthenshire LEA	1287	1522	1166	3975
Ceredigion LEA	591	578	465	1634
Conwy LEA	780	843	399	2022
Denbighshire LEA	1118	1431	986	3535
Flintshire LEA	976	1280	923	3179
Gwynedd LEA	2113	2285	1706	6104
Merthyr Tydfill LEA	196	253	263	712
Monmouthshire LEA	415	438	514	1367
Neath Port Talbot LEA	1074	1317	798	3189
Newport LEA	904	477	791	2172
Pembrokeshire LEA	993	1190	769	2952
Powys LEA	1506	1376	864	3746
Rhondda Cynon Taff LEA	2744	3058	1607	7409
Swansea LEA	1631	1884	1287	4802
Torfaen LEA	514	606	542	1662
Vale of Glamorgan LEA	818	853	515	2186
Wrexham LEA	676	976	626	2278
Grand Total	24883	27547	19485	71915

2010-11 Activity Registrations

LA	(All)
Term	(Multiple Items)
Total Registrations	
Activity	Total
Aerobics	500
Archery	891
Athletics	3,640
Badminton	17,872
Baseball	2,118
Basketball	19,970
Bench Ball	720
Boccia	830
Bowls	164
Boxersize	2,133
Boxing/wrestling	495
Canoeing	1,069
Cheerleading	2,467
Climbing	3,073
Cricket	5,188
Cycling	1,276
Dance	23,432
Dodgeball	28,550
Fencing	779
Fitness	19,918
Football	39,336
Frisbee	2,371
Futsal	3,911
Golf	3,022
Gymnastics	3,610
Hockey	5,958
Horse Riding	456
Ice Skating	1,080
Judo	740
Lacrosse	601
Martial Arts	2,965
Mountain Biking	1,984
Multi activity club	19,669
Netball	7,494
OAA	2,124
Rounders	4,198
Rowing	1,797
Rugby	9,760
Sailing	150
Skiing	738
Squash	1,253
Street Dance	2,601
Surfing	1,119
Swimming	4,883
Table Tennis	12,976
Tennis	8,787
Trampolining	4,189
Volleyball	2,487
Walking	950
Water Polo	878
Other	8,053
Grand Total	295,225

2010-11 Activity Registrations BY Term

LA	(All)			
Total Registrations				
Activity	Autumn 2010	Spring 2011	Summer 2011	Grand Total
Aerobics	312	96	92	500
Archery	283	81	527	891
Athletics	146	418	3,076	3,640
Badminton	6,564	7,602	3,706	17,872
Baseball	112	0	2,006	2,118
Basketball	7,155	7,645	5,170	19,970
Bench Ball	54	276	390	720
Boccia	146	103	581	830
Bowls	32	68	64	164
Boxersize	992	852	289	2,133
Boxing/wrestling	197	119	179	495
Canoeing	440	212	417	1,069
Cheerleading	1,021	939	507	2,467
Climbing	585	732	1,756	3,073
Cricket	468	974	3,746	5,188
Cycling	231	436	609	1,276
Dance	9,257	9,816	4,359	23,432
Dodgeball	13,069	9,778	5,703	28,550
Fencing	425	195	159	779
Fitness	6,232	6,028	7,658	19,918
Football	16,010	12,654	10,672	39,336
Frisbee	305	340	1,726	2,371
Futsal	1,388	1,568	955	3,911
Golf	658	645	1,719	3,022
Gymnastics	1,813	1,391	406	3,610
Hockey	2,410	2,177	1,371	5,958
Horse Riding	223	108	125	456
Ice Skating	656	306	118	1,080
Judo	241	273	226	740
Lacrosse	240	169	192	601
Martial Arts	1,119	633	1,213	2,965
Mountain Biking	346	423	1,215	1,984
Multi activity club	5,869	6,081	7,719	19,669
Netball	3,275	3,047	1,172	7,494
OAA	282	462	1,380	2,124
Rounders	227	237	3,734	4,198
Rowing	355	505	937	1,797
Rugby	4,096	3,800	1,864	9,760
Sailing	33	11	106	150
Skiing	299	315	124	738
Squash	504	464	285	1,253
Street Dance	0	0	2,601	2,601
Surfing	283	21	815	1,119
Swimming	2,248	1,444	1,191	4,883
Table Tennis	5,715	4,491	2,770	12,976
Tennis	348	895	7,544	8,787
Trampolining	1,585	1,481	1,123	4,189
Volleyball	145	354	1,988	2,487
Walking	742	36	172	950
Water Polo	396	228	254	878
Other	2,287	2,842	2,924	8,053
Grand Total	101,819	93,771	99,635	295,225

5x60 Activity Registrations by LA 2010-11

2010-11 Activity Registrations by School

Term (Multiple Items)

Total Registrations	LA																					
Activity	Anglesey	Blaenau Gwent	Bridgend	Caerphilly	Cardiff	Carmarthen	Ceredigion	Conwy	Denbigh	Flintshire	Gwynedd	Merthyr	Monmouth	Neath Port Talbot	Newport	Pembrokeshire	Powys	RCT	Swansea	Torfaen	Vale	Wrexham
Aerobics	0	0	0	46	27	0	13	11	93	26	62	24	0	0	5	0	5	36	24	128	0	0
Archery	108	0	37	0	180	12	0	0	0	316	0	0	0	0	130	0	12	96	0	0	0	0
Athletics	37	30	147	167	478	109	0	19	399	59	573	0	219	32	202	11	95	639	153	123	128	20
Badminton	1097	240	492	643	413	666	496	2513	217	417	2003	607	140	1026	89	1291	1584	924	1693	723	360	238
Baseball	15	18	46	156	629	44	0	0	24	0	291	0	82	0	141	398	0	132	43	67	32	0
Basketball	945	178	1324	717	3021	852	256	125	803	679	1606	363	181	739	898	1119	875	1847	2016	393	595	438
Bench Ball	0	0	36	19	0	0	0	0	0	0	0	0	0	0	262	0	54	66	0	178	87	18
Boccia	0	0	43	0	0	0	0	32	500	9	0	0	0	0	22	20	45	98	17	0	0	44
Bowls	0	0	0	48	0	0	7	0	0	0	0	0	15	0	0	0	35	59	0	0	0	0
Boxersize	0	24	25	46	792	155	35	0	68	189	72	0	10	261	116	36	83	42	36	0	99	44
Boxing/wrestling	0	0	4	0	10	0	0	17	12	94	90	0	130	0	65	0	0	73	0	0	0	0
Canoeing	42	0	14	43	152	73	43	0	61	65	170	0	21	63	0	8	69	101	24	61	59	0
Cheerleading	30	0	0	16	410	40	10	9	24	116	329	0	0	169	50	243	26	504	4	81	406	0
Climbing	15	16	96	0	311	27	61	130	364	67	325	34	114	0	0	118	96	198	990	87	0	24
Cricket	377	316	129	299	0	169	379	118	504	165	631	330	90	202	64	302	424	309	18	17	18	327
Cycling	0	0	53	0	302	0	29	0	65	12	255	0	11	0	23	92	88	49	297	0	0	0
Dance	284	392	560	1852	2274	993	556	864	1307	888	1050	986	353	1093	1673	1537	690	2066	1521	801	1152	540
Dodgeball	1283	604	1391	1679	1184	1472	677	847	2492	994	1282	591	314	2371	3149	591	1534	1726	787	1097	2159	326
Fencing	0	0	17	43	32	56	0	0	84	0	0	0	347	0	0	0	98	0	28	0	74	0
Fitness	599	906	673	1444	1984	854	442	260	3707	203	1822	113	344	453	669	1669	423	796	835	312	487	923
Football	705	1105	2655	2704	2893	1655	1477	723	1875	940	1396	405	490	1163	6802	2205	1869	4042	1404	1441	705	682
Frisbee	0	176	91	0	143	27	0	0	432	0	355	121	81	0	0	478	23	52	0	238	136	18
Futsal	593	0	498	51	60	0	0	827	581	0	70	0	0	17	118	62	0	96	0	0	523	415
Golf	286	13	8	28	31	77	20	10	252	123	313	257	165	128	23	232	426	227	45	164	87	107
Gymnastics	100	254	121	457	185	175	0	70	186	111	124	0	0	387	74	0	225	680	227	3	112	119
Hockey	471	78	168	577	648	430	145	83	405	179	238	0	151	33	53	638	432	746	351	0	68	64
Horse Riding	0	0	0	17	5	0	22	0	29	0	0	0	44	0	12	0	34	293	0	0	0	0
Ice Skating	0	0	0	0	0	20	0	0	515	284	0	0	0	0	0	0	0	261	0	0	0	0
Judo	0	0	24	90	0	0	0	20	0	0	0	0	111	0	0	302	23	8	93	69	0	0
Lacrosse	0	0	0	33	0	126	0	0	104	24	0	0	0	0	0	0	61	0	0	0	253	0
Martial Arts	0	10	141	142	1029	0	0	9	641	24	73	34	151	107	36	0	0	53	0	159	16	340
Mountain Biking	393	4	127	49	0	203	82	22	366	0	99	0	0	67	12	21	278	71	103	81	0	6
Multi activity club	1292	193	607	1579	702	1514	64	68	748	3457	1523	471	0	1092	352	224	723	3075	1619	190	69	107
Netball	59	240	455	487	819	182	0	159	308	537	773	38	0	203	0	99	165	1258	846	663	102	101
OAA	629	0	0	0	0	109	156	0	90	0	310	0	0	30	0	168	137	141	295	41	0	18
Rounders	329	11	446	196	0	164	57	0	272	331	465	442	147	163	0	0	362	556	136	71	50	0
Rowing	0	0	0	0	1301	0	0	0	0	20	12	0	56	0	0	0	0	0	408	0	0	0
Rugby	495	247	445	786	375	861	5	85	515	204	945	48	278	379	495	751	641	1098	209	620	77	201
Sailing	0	0	0	0	23	0	0	0	12	0	36	0	0	31	0	0	23	0	25	0	0	0
Skiing	95	23	22	13	0	26	0	33	292	51	0	0	0	36	21	6	0	88	32	0	0	0
Squash	0	30	33	12	0	41	12	0	17	221	379	0	77	0	28	145	204	54	0	0	0	0
Street Dance	38	52	50	32	551	26	0	71	26	199	0	320	186	80	23	130	0	109	170	94	272	172
Surfing	16	0	230	13	0	137	93	0	0	0	87	0	0	177	0	231	18	1	59	0	57	0
Swimming	4	279	138	392	744	326	125	102	601	320	240	11	18	175	424	0	29	498	211	0	94	152
Table Tennis	195	914	148	1136	2923	463	369	597	511	531	520	81	109	71	320	1031	765	1598	211	27	423	33

5x60 Activity Registrations by LA 2010-11

Activity	Anglesey	Blaenau Gwent	Bridgend	Caerphilly	Cardiff	Carmarthen	Ceredigion	Conwy	Denbigh	Flintshire	Gwynedd	Merthyr	Monmouth	Neath Port Talbot	Newport	Pembrokeshire	Powys	RCT	Swansea	Torfaen	Vale	Wrexham
Tennis	439	209	807	381	333	534	270	631	481	700	559	8	267	306	81	857	363	790	97	252	194	228
Trampolining	0	0	114	51	585	97	155	236	544	41	426	0	497	182	0	87	40	455	81	162	363	73
Volleyball	0	0	14	19	673	35	27	0	25	0	197	0	0	49	0	561	38	190	0	284	290	85
Walking	0	0	529	0	0	34	0	19	106	0	228	0	0	0	0	0	0	34	0	0	0	0
Water Polo	0	0	0	42	91	0	44	15	141	40	59	23	197	0	0	0	0	70	0	0	14	142
Other	134	308	552	421	197	96	310	66	915	687	592	153	68	491	231	221	396	788	291	57	325	754
Grand Total	11,105	6,870	13,510	16,926	26,510	12,880	6,437	8,791	21,714	13,323	20,580	5,460	5,464	11,776	16,663	15,884	13,511	27,093	15,399	8,684	9,886	6,759

Year End Figures

Year 2011

School	Values													Total School Attendances	SEN Participants
	Children In School	Boys in School	Girls in School	No of participants in 5x60	No participating 5 or more	Boys attending 1 session	Girls attending 1 session	% Boys participating in 5x60	% Girls participating in 5x60	Participants attending 30 sessions or more	Participants attending 20 sessions or more	Participants attending 50 sessions or more			
Anglesey LEA	3509	1828	1681	2569	1987	1436	1128	78.56%	67.10%	538	855	212	47712	513	
Blaenau Gwent LEA	3661	1856	1805	2057	1214	1210	847	65.19%	46.93%	193	368	51	23127	0	
Bridgend LEA	7758	4046	3712	4622	3259	2670	1951	65.99%	52.56%	476	937	117	50520	98	
Caerphilly LEA	10893	5162	5731	5606	3336	2796	2773	54.17%	48.39%	501	1010	153	63152	638	
Cardiff LEA	15666	8113	7589	8919	4883	4354	4327	53.67%	57.02%	652	1213	302	78810	556	
Carmarthenshire LEA	10376	5205	4842	4739	3162	2705	2019	51.97%	41.70%	519	1017	117	59101	365	
Ceredigion LEA	3746	1933	1813	1929	1168	1205	782	62.34%	43.13%	141	298	44	20078	229	
Conwy LEA	6100	3114	2986	3571	1576	1692	1141	54.34%	38.21%	223	433	64	29095	444	
Denbighshire LEA	6487	3272	3215	4355	2262	2163	2171	66.11%	67.53%	242	538	79	62676	962	
Flintshire LEA	7768	3914	3854	4601	3321	2305	2272	58.89%	58.95%	385	799	120	51921	522	
Gwynedd LEA	6711	3406	3306	4861	3510	2538	2321	74.52%	70.21%	868	1454	401	87497	989	
Merthyr Tydfill LEA	3248	1608	1640	1761	1136	888	860	55.22%	52.44%	119	250	18	15522	0	
Monmouthshire LEA	4156	2152	2004	1774	1078	984	789	45.72%	39.37%	227	438	54	22427	440	
Neath Port Talbot LEA	8149	3968	4181	3826	2262	2118	1706	53.38%	40.80%	385	756	105	46066	77	
Newport LEA	8315	4245	4070	2713	1477	1445	675	34.04%	16.58%	101	237	33	17122	31	
Pembrokeshire LEA	7152	3673	3496	4997	3225	2755	2230	75.01%	63.79%	602	1131	183	62244	1201	
Powys LEA	7515	3900	3615	4366	2639	2612	1721	66.97%	47.61%	416	779	143	49740	813	
Rhondda Cynon Taff LEA	13351	6787	6564	7593	5312	4031	3355	59.39%	51.11%	1189	2009	500	113441	850	
Swansea LEA	12604	6458	6146	5987	3201	3090	2622	47.85%	42.66%	434	911	146	58524	592	
Torfaen LEA	6629	3405	3224	3712	1738	1903	1808	55.89%	56.08%	99	215	20	23073	373	
Vale of Glamorgan LEA	8063	4089	3974	4250	2244	2265	1985	55.39%	49.95%	218	482	25	35068	478	
Wrexham LEA	7095	3688	3407	3301	2120	1930	1371	52.33%	40.24%	191	453	26	32583	2692	
Grand Total	168952	85822	82855	92109	56110	49095	40854	57.21%	49.31%	8719	16583	2913	1049499	12863	

Retention Rates

Year 2011

School	Values				
	% children attending 1 session	% children attending 5 or more sessions	% children attending 20 or more sessions	% children attending 30 or more sessions	% children attending 50 sessions or more
Anglesey LEA	73.21%	56.63%	24.37%	15.33%	6.04%
Blaenau Gwent LEA	56.19%	33.16%	10.05%	5.27%	1.39%
Bridgend LEA	59.58%	42.01%	12.08%	6.14%	1.51%
Caerphilly LEA	51.46%	30.63%	9.27%	4.60%	1.40%
Cardiff LEA	56.93%	31.17%	7.74%	4.16%	1.93%
Carmarthenshire LEA	45.67%	30.47%	9.80%	5.00%	1.13%
Ceredigion LEA	51.49%	31.18%	7.96%	3.76%	1.17%
Conwy LEA	58.54%	25.84%	7.10%	3.66%	1.05%
Denbighshire LEA	67.13%	34.87%	8.29%	3.73%	1.22%
Flintshire LEA	59.23%	42.75%	10.29%	4.96%	1.54%
Gwynedd LEA	72.43%	52.30%	21.67%	12.93%	5.98%
Merthyr Tydfill LEA	54.22%	34.98%	7.70%	3.66%	0.55%
Monmouthshire LEA	42.69%	25.94%	10.54%	5.46%	1.30%
Neath Port Talbot LEA	46.95%	27.76%	9.28%	4.72%	1.29%
Newport LEA	32.63%	17.76%	2.85%	1.21%	0.40%
Pembrokeshire LEA	69.87%	45.09%	15.81%	8.42%	2.56%
Powys LEA	58.10%	35.12%	10.37%	5.54%	1.90%
Rhondda Cynon Taff LEA	56.87%	39.79%	15.05%	8.91%	3.75%
Swansea LEA	47.50%	25.40%	7.23%	3.44%	1.16%
Torfaen LEA	56.00%	26.22%	3.24%	1.49%	0.30%
Vale of Glamorgan LEA	52.71%	27.83%	5.98%	2.70%	0.31%
Wrexham LEA	46.53%	29.88%	6.38%	2.69%	0.37%
Grand Total	54.52%	33.21%	9.82%	5.16%	1.72%

Gender Participation

Year 2011

School	Values	
	% Boys Participating in 5x60	% Girls Participating in 5x60
Anglesey LEA	78.56%	67.10%
Blaenau Gwent LEA	65.19%	46.93%
Bridgend LEA	65.99%	52.56%
Caerphilly LEA	54.17%	48.39%
Cardiff LEA	53.67%	57.02%
Carmarthenshire LEA	51.97%	41.70%
Ceredigion LEA	62.34%	43.13%
Conwy LEA	54.34%	38.21%
Denbighshire LEA	66.11%	67.53%
Flintshire LEA	58.89%	58.95%
Gwynedd LEA	74.52%	70.21%
Merthyr Tydfill LEA	55.22%	52.44%
Monmouthshire LEA	45.72%	39.37%
Neath Port Talbot LEA	53.38%	40.80%
Newport LEA	34.04%	16.58%
Pembrokeshire LEA	75.01%	63.79%
Powys LEA	66.97%	47.61%
Rhondda Cynon Taff LEA	59.39%	51.11%
Swansea LEA	47.85%	42.66%
Torfaen LEA	55.89%	56.08%
Vale of Glamorgan LEA	55.39%	49.95%
Wrexham LEA	52.33%	40.24%
Grand Total	57.21%	49.31%

School Year End Performance 2010-11

School Year End Figures

Year 2011

School	Values												Total School Attendances	SEN Participants
	Children In School	Boys in School	Girls in School	No of participants in 5x60	No participating 5 or more	Boys attending 1 session	Girls attending 1 session	% Boys participating in 5x60	% Girls participating in 5x60	Participants attending 30 sessions or more	Participants attending 20 sessions or more	Participants attending 50 sessions or more		
Anglesey LEA	3509	1828	1681	2569	1987	1436	1128	78.56%	67.10%	538	855	212	47712	513
Ysgol David Hughes	920	488	432	798	747	432	366	88.52%	84.72%	247	397	85	19893	26
Ysgol Gyfun Llangefni	690	345	345	429	276	247	182	71.59%	52.75%	35	59	6	4474	72
Ysgol Syr Thomas Jones	571	297	274	424	301	250	174	84.18%	63.50%	112	154	59	9033	137
Ysgol Uwchradd Bodedern	666	359	307	533	424	326	207	90.81%	67.43%	92	160	36	8881	171
Ysgol Uwchradd Caergybi	662	339	323	385	239	181	199	53.39%	61.61%	52	85	26	5431	107
Blaenau Gwent LEA	3661	1856	1805	2057	1214	1210	847	65.19%	46.93%	193	368	51	23127	0
Abertillery Comprehensive School	872	470	402	447	292	284	163	60.43%	40.55%	55	91	27	6139	0
Brymawr School	804	407	397	371	155	237	134	58.23%	33.75%	10	20	3	2468	0
Ebbw Vale Comprehensive School	392	190	202	273	195	147	126	77.37%	62.38%	44	86	3	4150	0
Glyncoed Comprehensive School	784	384	400	521	300	287	234	74.74%	58.50%	38	77	8	5084	0
Tredegar Comprehensive School	809	405	404	445	272	255	190	62.96%	47.03%	46	94	10	5286	0
Bridgend LEA	7758	4046	3712	4622	3259	2670	1951	65.99%	52.56%	476	937	117	50520	98
Archbishop Mcgrath Catholic School	572	280	292	392	202	210	163	75.00%	55.82%	19	53	1	3416	0
Brynteg Comprehensive School	1536	800	736	926	714	486	440	60.75%	59.78%	58	129	9	2309	0
Bryntirion Comprehensive School	882	464	418	476	364	314	162	67.67%	38.76%	88	179	22	8181	0
Cynffig Comprehensive School	615	345	270	425	216	273	152	79.13%	56.30%	1	23	0	2845	0
Heronbridge	89	62	27	67	64	48	21	77.42%	77.78%	29	36	10	1965	88
Maesteg Comprehensive School	918	474	444	615	439	365	250	77.00%	56.31%	71	137	15	8575	0
Ogmore Comprehensive	507	254	253	335	230	207	128	81.50%	50.59%	72	99	30	5761	0
Pencoed Comprehensive School	799	432	367	354	227	161	193	37.27%	52.59%	1	12	0	2634	0
Porthcawl Comprehensive	1128	569	559	736	596	421	315	73.99%	56.35%	111	216	23	11264	10
Ynysawdre Comprehensive School	712	366	346	296	207	185	127	50.55%	36.71%	26	53	7	3570	0
Caerphilly LEA	10893	5162	5731	5606	3336	2796	2773	54.17%	48.39%	501	1010	153	63152	638
Bedwas High School	678	359	319	374	260	212	161	59.05%	50.47%	46	91	11	4953	162
Blackwood Comprehensive	964	473	491	617	544	267	350	56.45%	71.28%	81	183	19	9879	0
Cwmcarn High School	755	406	349	393	188	258	135	63.55%	38.68%	18	50	3	3332	0
Heolddu Comprehensive School	629	322	307	424	287	245	165	76.09%	53.75%	44	80	16	5254	136
Lewis Girls Comprehensive School	1628	0	1628	815	371	0	815	#DIV/0!	50.06%	73	132	24	8151	30
Lewis School Pengam	793	793	0	420	221	420	0	52.96%	#DIV/0!	38	74	13	4569	0
Newbridge Comprehensive	846	436	410	447	217	241	206	55.28%	50.24%	33	69	11	4345	56
Pontlanfraith Comprehensive School	592	314	278	280	240	152	128	48.41%	46.04%	24	68	6	4111	31
Rhymney Comprehensive School	819	434	385	335	165	199	136	45.85%	35.32%	28	42	12	3189	89
Risca Community School	465	213	252	322	212	177	145	83.10%	57.54%	43	73	6	4156	0
St Cenydd Comprehensive School	989	509	480	539	264	283	234	55.60%	48.75%	42	71	17	5256	41
St Martin Comprehensive School	891	456	435	459	291	243	216	53.29%	49.66%	31	76	15	5039	93
Ysgol Gyfun Cwm Rhymni	844	447	397	181	76	99	82	22.15%	20.65%	0	1	0	918	0
Cardiff LEA	15666	8113	7589	8919	4883	4354	4327	53.67%	57.02%	652	1213	302	78810	556
Cantonian High School	580	302	278	399	174	219	180	72.52%	64.75%	3	21	0	2432	50
Cardiff High School	1060	564	496	538	225	182	133	32.27%	26.81%	6	26	0	3020	0
Cathays High School	758	386	372	526	370	313	207	81.09%	55.65%	73	132	20	1950	37
Corpus Christi Catholic High School	1006	467	539	377	156	118	259	25.27%	48.05%	3	12	0	1906	5

School Year End Performance 2010-11

School	Children In School	Boys in School	Girls in School	No of participants in 5x60	No participating 5 or more	Boys attending 1 session	Girls attending 1 session	% Boys participating in 5x60	% Girls participating in 5x60	Participants attending 30 sessions or more	Participants attending 20 sessions or more	Participants attending 50 sessions or more	Total School Attendances	SEN Participants
Fitzalan High School	1168	597	571	657	288	398	259	66.67%	45.36%	169	176	144	8881	42
Glyn Derw High School	600	327	273	272	179	114	154	34.86%	56.41%	33	126	10	4348	0
Llanederyn High School	557	284	273	288	107	154	130	54.23%	47.62%	16	22	6	2108	0
Llanishen High School	1316	675	641	569	484	249	319	36.89%	49.77%	99	158	32	8068	95
Llanrumney High School	555	279	276	301	147	147	154	52.69%	55.80%	22	54	7	2908	0
Mary Immaculate RC High School	544	285	259	470	442	243	226	85.26%	87.26%	5	42	0	4428	45
Michaelston Community School	580	310	270	365	196	182	183	58.71%	67.78%	34	63	19	4135	0
Radyr Comprehensive School	944	528	416	616	289	229	387	43.37%	93.03%	41	71	23	5961	0
Rumney High School	698	364	334	443	191	186	257	51.10%	76.95%	10	23	3	3487	25
St Illtyds R.C High School	805	398	407	505	267	249	259	62.56%	63.64%	16	38	1	3783	10
St Teilio's C.I.W High School	928	501	463	608	276	308	300	61.48%	64.79%	3	20	0	3489	164
The Bishop of Llandaff C.I.W High	945	419	526	469	391	252	215	60.14%	40.87%	26	49	9	4597	8
Whitchurch High School	1788	944	844	1148	509	564	584	59.75%	69.19%	60	133	24	9477	51
Willows High School	774	423	351	354	178	233	121	55.08%	34.47%	19	33	4	2824	10
Greenhill Special School	60	60	0	14	14	14	0	23.33%	#DIV/0!	14	14	0	1008	14
Carmarthenshire LEA	10376	5205	4842	4739	3162	2705	2019	51.97%	41.70%	519	1017	117	59101	365
Amman Valley Comprehensive School	1327	685	642	562	364	298	263	43.50%	40.97%	30	79	7	5584	37
Bryngwyn Comprehensive School	836	435	401	419	335	199	215	45.75%	53.62%	103	157	52	9363	92
Coedcae Comprehensive School	1052	559	493	316	230	179	137	32.02%	27.79%	19	45	1	3268	0
Glan-Y-Mor Comprehensive School	555	283	272	317	177	201	116	71.02%	42.65%	9	28	1	2607	9
Heol Goffa Special School	24	16	8	16	14	7	3	43.75%	37.50%	2	6	0	291	24
Queen Elizabeth High	1227	601	626	379	360	194	184	32.28%	29.39%	131	215	16	8913	17
St John Lloyd Catholic Comprehensive	527	266	261	252	138	118	134	44.36%	51.34%	30	55	6	2836	36
Ysgol Gyfun Bro Myrddin	688	342	346	275	260	152	123	44.44%	35.55%	45	97	1	4293	0
Ysgol Gyfun Dyffryn Taf	822	431	391	397	169	268	129	62.18%	32.99%	3	10	0	2142	0
Ysgol Gyfun Emlyn	501	267	234	241	139	161	78	60.30%	33.33%	15	36	6	2524	0
Ysgol Gyfun Maes Yr yrfa	653	167	157	324	210	167	157	100.00%	100.00%	30	71	6	3917	6
Ysgol Gyfun Pantycelyn	245	126	119	182	134	95	87	75.40%	73.11%	28	49	3	2641	0
Ysgol Gyfun Tregib	796	428	368	407	291	243	164	56.78%	44.57%	45	94	9	5351	0
Ysgol Gyfun Y Strade	824	416	408	463	198	289	174	69.47%	42.65%	2	11	0	2364	10
Ysgol Y Gwendraeth	299	183	116	189	143	134	55	73.22%	47.41%	27	64	9	3007	134
Ceredigion LEA	3746	1933	1813	1929	1168	1205	782	62.34%	43.13%	141	298	44	20078	229
Cardigan County Secondary	445	250	195	234	144	157	77	62.80%	39.49%	21	44	0	2369	107
Penglais Comprehensive School	1001	525	476	495	303	323	170	61.52%	35.71%	9	36	3	3854	20
Ysgol Gyfun Aberaeron	565	280	285	220	134	179	101	63.93%	35.44%	21	39	9	2696	5
Ysgol Gyfun Dyffryn Teifi	452	219	233	250	161	144	106	65.75%	45.49%	13	29	1	2268	93
Ysgol Gyfun Llanbedr-Pont-Steffan	584	291	293	298	169	145	153	49.83%	52.22%	35	74	10	3614	0
Ysgol Gyfun Penweddig	452	247	205	254	149	163	91	65.99%	44.39%	4	21	0	2130	4
Ysgol Uwchradd Tregaron	247	121	126	178	108	94	84	77.69%	66.67%	38	55	21	3147	0
Conwy LEA	6100	3114	2986	3571	1576	1692	1141	54.34%	38.21%	223	433	64	29095	444
Eirias High School	1240	628	612	993	143	122	133	19.43%	21.73%	40	49	21	3944	33
Ysgol Aberconwy	879	442	437	385	183	214	171	48.42%	39.13%	25	37	1	2950	67
Ysgol Bryn Elian	648	337	311	376	233	235	141	69.73%	45.34%	40	74	12	4626	84
Ysgol Dyffryn Conwy	616	308	308	359	190	199	160	64.61%	51.95%	1	34	0	2628	43
Ysgol Emrys Ap Iwan	1089	587	502	466	238	311	155	52.98%	30.88%	16	42	3	3573	20
Ysgol John Bright	955	479	476	504	252	323	181	67.43%	38.03%	46	101	13	5400	85
Ysgol Y Creuddyn	591	277	314	424	275	244	180	88.09%	57.32%	32	63	6	4313	48
Ysgol Y Gogarth	82	56	26	64	62	44	20	78.57%	76.92%	23	33	8	1661	64

School Year End Performance 2010-11

School	Children In School	Boys in School	Girls in School	No of participants in 5x60	No participating 5 or more	Boys attending 1 session	Girls attending 1 session	% Boys participating in 5x60	% Girls participating in 5x60	Participants attending 30 sessions or more	Participants attending 20 sessions or more	Participants attending 50 sessions or more	Total School Attendances	SEN Participants
Denbighshire LEA	6487	3272	3215	4355	2262	2163	2171	66.11%	67.53%	242	538	79	62676	962
Blessed Edward Jones RC School	498	262	236	304	103	164	140	62.60%	59.32%	19	31	8	11288	12
Denbigh High School	648	391	257	320	213	170	150	43.48%	58.37%	38	64	18	4406	132
Prestatyn High School	1429	732	697	1192	526	605	587	82.65%	84.22%	37	125	15	10188	377
Rhyl High School	966	523	443	558	193	326	211	62.33%	47.63%	8	35	2	15823	16
St Brigids School	284	20	264	240	130	20	220	100.00%	83.33%	19	34	1	2250	15
Ysgol Brynhyfryd	1016	522	494	640	463	329	311	63.03%	62.96%	27	71	5	6427	169
Ysgol Dinas Bran	842	445	397	496	274	258	238	57.98%	59.95%	47	80	15	5420	116
Ysgol Uwchradd Glan Clwyd	804	377	427	605	360	291	314	77.19%	73.54%	47	98	15	6874	125
Flintshire LEA	7768	3914	3854	4601	3321	2305	2272	58.89%	58.95%	385	799	120	51921	522
Argoed High School	581	324	257	440	312	254	185	78.40%	71.98%	25	117	2	5155	70
Castell Alun High School	1057	542	515	848	357	421	409	77.68%	79.42%	25	66	3	5657	0
Connah's Quay High School	883	443	440	723	613	345	373	77.88%	84.77%	37	55	21	6593	91
Elfed High	613	299	314	404	368	216	188	72.24%	59.87%	63	123	24	6619	89
Flint High School	603	320	283	344	291	206	138	64.38%	48.76%	130	183	53	9178	177
Hawarden High School	950	470	480	479	198	206	273	43.83%	56.88%	40	79	3	4299	44
Holywell High School	581	293	288	302	263	182	120	62.12%	41.67%	44	84	10	4679	50
Mold Alun High School	1215	602	613	452	433	186	266	30.90%	43.39%	10	38	4	4238	1
St Richard Gwyn Roman Catholic High	809	406	403	416	321	197	219	48.52%	54.34%	9	41	0	4080	0
Ysgol Maes Garmon	476	215	261	193	165	92	101	42.79%	38.70%	2	13	0	1423	0
Gwynedd LEA	6711	3406	3306	4861	3510	2538	2321	74.52%	70.21%	868	1454	401	87497	989
Ysgol Ardudwy	310	162	148	252	188	143	109	88.27%	73.65%	41	75	11	3848	76
Ysgol Botwnnog	481	251	230	373	333	196	177	78.09%	76.96%	109	174	43	8962	92
Ysgol Brynrefail	642	317	325	408	222	246	162	77.60%	49.85%	19	47	4	3521	82
Ysgol Dyffryn Nantle	433	201	232	358	280	152	206	75.62%	88.79%	42	95	10	5294	27
Ysgol Dyffryn Ogwen	313	153	160	289	245	142	147	92.81%	91.88%	55	92	21	5369	68
Ysgol Eifionydd	452	238	214	319	210	176	141	73.95%	65.89%	36	72	5	3975	28
Ysgol Friars	1056	533	523	464	258	243	221	45.59%	42.26%	30	76	7	4590	184
Ysgol Glan Y Mor	513	247	266	421	355	197	224	79.76%	84.21%	138	189	78	11594	58
Ysgol Syr Hugh Owen	680	359	321	520	412	256	264	71.31%	82.24%	68	131	19	7192	143
Ysgol Tryfan	411	199	212	279	185	174	105	87.44%	49.53%	18	57	2	3151	53
Ysgol Uwchradd Tywyn	326	178	148	323	267	177	146	99.44%	98.65%	176	211	135	17368	35
Ysgol Y Berwyn	313	168	146	292	264	155	137	92.26%	93.84%	95	138	59	7228	55
Ysgol Y Gader	391	192	199	321	208	158	163	82.29%	81.91%	36	82	5	4090	79
Ysgol Y Moelwyn	390	208	182	242	83	123	119	59.13%	65.38%	5	15	2	1315	9
Merthyr Tydfil LEA	3248	1608	1640	1761	1136	888	860	55.22%	52.44%	119	250	18	15522	0
Afon Taf High School	904	458	446	442	280	215	224	46.94%	50.22%	29	81	0	3775	0
Bishop Hedley High School	580	265	315	488	332	256	230	96.60%	73.02%	34	58	6	4081	0
Cyfartha High School	1111	561	550	415	302	246	169	43.85%	30.73%	25	66	5	4366	0
Pen-Y-Dre High School	653	324	329	416	222	171	237	52.78%	72.04%	31	45	7	3300	0
Monmouthshire LEA	4156	2152	2004	1774	1078	984	789	45.72%	39.37%	227	438	54	22427	440
Caldicot Comprehensive	1208	642	566	531	171	321	210	50.00%	37.10%	26	43	7	3234	32
Chepstow Comprehensive	764	406	358	480	387	281	199	69.21%	55.59%	111	164	36	8665	195
King Henry VIII Comprehensive School	888	459	429	288	268	153	135	33.33%	31.47%	64	158	9	6110	24
Monmouth Comprehensive School	1296	645	651	475	252	229	245	35.50%	37.63%	26	73	2	4418	189
Neath Port Talbot LEA	8149	3968	4181	3826	2262	2118	1706	53.38%	40.80%	385	756	105	46066	77
Cefn Saeson Comprehensive School	800	408	392	330	256	186	144	45.59%	36.73%	34	82	4	4446	0
Cwmtawe Comprehensive School	1256	651	605	570	308	344	226	52.84%	37.36%	58	104	22	6625	23

School Year End Performance 2010-11

School	Children In School	Boys in School	Girls in School	No of participants in 5x60	No participating 5 or more	Boys attending 1 session	Girls attending 1 session	% Boys participating in 5x60	% Girls participating in 5x60	Participants attending 30 sessions or more	Participants attending 20 sessions or more	Participants attending 50 sessions or more	Total School Attendances	SEN Participants
Cwrt Sart Comprehensive School	518	246	272	297	235	163	132	66.26%	48.53%	52	93	10	4877	27
Cymer Afan Comprehensive School	297	149	148	186	117	101	85	67.79%	57.43%	22	48	4	2357	0
Dwr-Y-Felin Comprehensive School	1173	593	580	126	90	64	62	10.79%	10.69%	0	2	0	1040	0
Dyffryn Afan Comprehensive School	812	324	488	390	215	182	208	56.17%	42.62%	33	66	20	4667	0
Glan Afan Comprehensive	472	236	236	270	179	159	111	67.37%	47.03%	25	62	6	3298	1
Llangatwg Comprehensive School	789	396	393	540	257	297	243	75.00%	61.83%	19	50	1	4041	0
Sandfields Comprehensive School	622	312	310	382	284	203	179	65.06%	57.74%	71	113	27	6441	26
St Joseph's Catholic School	597	276	321	268	5	162	106	58.70%	33.02%	17	50	0	2881	0
Ysgol Gyfun Ystalyfera	813	377	436	467	316	257	210	68.17%	48.17%	54	86	11	5393	0
Newport LEA	8315	4245	4070	2713	1477	1445	675	34.04%	16.58%	101	237	33	17122	31
Basseleg school	900	450	450	257	188	143	114	31.78%	25.33%	0	0	0	257	0
Duffryn High School	1059	546	513	144	79	79	67	14.47%	13.06%	2	20	0	212	0
Hartridge High School	696	378	318	436	118	153	4	40.48%	1.26%	21	46	5	2261	19
Lliswerry High School	884	434	450	264	209	211	45	48.62%	10.00%	72	118	28	5623	0
Newport High School	970	471	499	427	235	208	219	44.16%	43.89%	1	4	0	654	0
St Julians' Comprehensive School	1325	698	627	657	369	331	95	47.42%	15.15%	1	22	0	3802	12
Caerleon Comprehensive School	1312	679	633	380	213	253	50	37.26%	7.90%	4	27	0	2890	0
St Josephs RC High School	1169	589	580	148	66	67	81	11.38%	13.97%	0	0	0	1423	0
Pembrokeshire LEA	7152	3673	3496	4997	3225	2755	2230	75.01%	63.79%	602	1131	183	62244	1201
Milford Haven School	912	468	444	503	357	239	264	51.07%	59.46%	25	95	12	5427	0
Sir Thomas Picton School	985	493	492	609	424	349	260	70.79%	52.85%	68	120	26	7800	25
Tasker-Milward V.C School	903	443	460	482	391	283	187	63.88%	40.65%	94	180	23	8603	4
The Greenhill School	1019	533	503	980	583	480	500	90.06%	99.40%	135	227	44	12835	233
Ysgol Bro Gwaun	525	282	243	307	181	215	92	76.24%	37.86%	37	77	12	1413	135
Ysgol Dewi Sant	840	426	414	668	488	352	316	82.63%	76.33%	106	184	32	10528	180
Ysgol Gyfun Ddwyeithog Y Preseli	773	391	382	500	318	308	192	78.77%	50.26%	38	86	1	5402	120
Ysgol Penfro	1195	637	558	948	483	529	419	83.05%	75.09%	99	162	33	10236	504
Powys LEA	7515	3900	3615	4366	2639	2612	1721	66.97%	47.61%	416	779	143	49740	813
Brecon High School	623	318	305	238	180	151	87	47.48%	28.52%	32	57	10	3390	43
Builth Wells High School	496	267	229	314	158	179	123	67.04%	53.71%	17	38	1	2633	63
Caereinion High School	527	271	256	388	249	206	182	76.01%	71.09%	36	80	8	4570	72
Crickhowell High School	580	298	282	341	179	199	138	66.78%	48.94%	0	13	0	2061	17
Gwernyfed High School	464	232	232	289	165	178	110	76.72%	47.41%	23	42	8	3050	13
John Beddoes School	380	203	177	261	282	136	125	67.00%	70.62%	129	160	66	9541	0
Llandrindod High School	516	284	232	309	192	197	105	69.37%	45.26%	43	85	16	4393	59
Llanfyllin High School	741	391	350	445	301	284	161	72.63%	46.00%	42	75	10	5186	91
Llanidloes High School	574	298	276	307	168	172	135	57.72%	48.91%	11	30	0	2372	32
Newtown High School	746	360	386	295	143	188	107	52.22%	27.72%	5	22	1	2042	93
Welshpool High School	958	503	455	555	224	357	191	70.97%	41.98%	13	34	1	3484	89
Ysgol Bro Ddyfi	312	151	161	218	133	112	106	74.17%	65.84%	11	23	1	1922	62
Ysgol Maes-Y- Dderwen	465	220	245	299	180	173	126	78.64%	51.43%	36	76	14	4038	74
Brynlllywarch Hall School	43	37	6	34	24	27	5	72.97%	83.33%	0	10	0	364	32
Ysgol Cedewain	38	28	10	27	25	19	8	67.86%	80.00%	11	16	7	3	27
Ysgol Penmaes	52	39	13	46	36	34	12	87.18%	92.31%	7	18	0	691	46
Rhondda Cynon Taff LEA	13351	6787	6564	7593	5312	4031	3355	59.39%	51.11%	1189	2009	500	113441	850
Aberdare Boys school	421	421	0	198	114	198	0	47.03%	#DIV/0!	13	29	1	1814	0
Aberdare Girls' Comprehensive School	477	0	477	198	197	0	198	#DIV/0!	41.51%	71	91	45	6627	20
Blaengwawr Comprehensive School	569	306	263	282	149	165	117	53.92%	44.49%	8	20	2	2084	0

School Year End Performance 2010-11

School	Children In School	Boys in School	Girls in School	No of participants in 5x60	No participating 5 or more	Boys attending 1 session	Girls attending 1 session	% Boys participating in 5x60	% Girls participating in 5x60	Participants attending 30 sessions or more	Participants attending 20 sessions or more	Participants attending 50 sessions or more	Total School Attendances	SEN Participants
Bryncelynnog Comprehensive School	911	445	466	554	464	321	233	72.13%	50.00%	140	221	48	12030	186
Cardinal Newman RC Comprehensive School	601	312	289	331	223	180	151	57.69%	52.25%	13	59	4	2976	53
Ferndale Community School	554	270	284	398	268	203	195	75.19%	68.66%	79	125	51	7795	30
Hawthorn High School	860	432	428	533	278	302	199	69.91%	46.50%	65	107	19	6320	20
Mountain Ash Comprehensive School	782	428	354	436	246	245	190	57.24%	53.67%	30	60	8	4353	121
Pontypridd High School	845	467	378	380	194	231	149	49.46%	39.42%	5	28	1	2614	0
St John Baptist C.I.W High School	770	398	372	351	330	176	166	44.22%	44.62%	91	153	32	8289	15
Tonypandy Comprehensive School	728	372	356	494	360	287	207	77.15%	58.15%	88	146	26	7529	141
Tonyrefail Comprehensive School	897	439	458	596	450	285	311	64.92%	67.90%	125	180	89	12300	54
Treorchy Comprehensive School	1242	646	596	755	553	414	341	64.09%	57.21%	113	225	27	11623	0
Y Pant Comprehensive School	1025	527	498	688	538	379	268	71.92%	53.82%	143	245	96	13021	6
Ysgol Gyfun Cymer Rhondda	654	315	339	394	264	159	177	50.48%	52.21%	82	117	13	5905	72
Ysgol Gyfun Llanhari	499	227	272	399	306	191	165	84.14%	60.66%	81	122	14	6597	0
Ysgol Gyfun Rhydywaun	778	397	381	471	249	195	253	49.12%	66.40%	25	50	15	6	75
Ysgol Ty Coch	57	42	15	39	35	28	11	66.67%	73.33%	16	22	9	1350	57
Garth Olwg	681	343	338	96	94	72	24	20.99%	7.10%	1	9	0	208	0
Swansea LEA	12604	6458	6146	5987	3201	3090	2622	47.85%	42.66%	434	911	146	58524	592
Birchgrove Comprehensive School	747	418	329	405	186	211	160	50.48%	48.63%	19	34	3	2996	0
Bishop Gore School	905	457	448	427	252	207	220	45.30%	49.11%	39	82	20	5027	6
Bishop Vaughan RC School	1095	546	549	368	162	224	144	41.03%	26.23%	28	50	12	3241	0
Bishopston Comprehensive School	1076	548	528	323	208	185	136	33.76%	25.76%	3	23	0	2471	1
Cefn Hengoed Community School	663	307	356	466	341	242	250	78.83%	70.22%	57	137	19	7900	87
Daniel James Community School	427	203	224	261	80	151	110	74.38%	49.11%	5	10	4	1335	79
Dylan Thomas Community School	589	317	272	326	205	157	169	49.53%	62.13%	30	73	19	4496	128
Gowerton School	1048	553	495	549	267	267	282	48.28%	56.97%	38	61	16	4736	141
Morrison Comprehensive School	865	447	418	515	228	283	219	63.31%	52.39%	31	51	16	4345	0
Olchfa School	1267	646	621	454	188	111	91	17.18%	14.65%	9	26	2	2868	18
Pentrehafod	973	511	462	379	232	220	159	43.05%	34.42%	42	90	8	4706	0
Penybryn Special School	100	77	23	77	73	59	18	76.62%	78.26%	19	35	10	77	77
Penyrheol Comprehensive School	906	481	425	584	219	319	265	66.32%	62.35%	28	57	14	4305	0
Pontarddulais Comprehensive School	784	393	391	228	137	87	141	22.14%	36.06%	8	27	0	2087	29
Ysgol Gyfun Bryn Tawe	639	306	333	281	180	178	103	58.17%	30.93%	53	96	2	3818	0
Ysgol Gyfun Gwyr	520	248	272	344	243	189	155	76.21%	56.99%	25	59	1	4116	26
Torfaen LEA	6629	3405	3224	3712	1738	1903	1808	55.89%	56.08%	99	215	20	23073	373
Abersychan Comprehensive School	948	497	451	537	258	286	251	57.55%	55.65%	6	18	0	3330	48
Croesyceiliog School	1323	670	653	778	271	434	344	64.78%	52.68%	29	42	8	4408	133
Fairwater School	728	370	358	435	220	208	227	56.22%	63.41%	25	47	4	3397	4
Llantarnam School	1112	588	524	508	284	239	269	40.65%	51.34%	17	45	3	3739	19
St Alban's RC High School	762	382	380	459	223	249	210	65.18%	55.26%	6	27	0	2699	52
West Monmouth Comprehensive School	936	517	419	536	260	300	235	58.03%	56.09%	16	32	5	3491	117
Ysgol Gyfun Gwynllyw	820	381	439	459	222	187	272	49.08%	61.96%	0	4	0	2009	0
Vale of Glamorgan LEA	8063	4089	3974	4250	2244	2265	1985	55.39%	49.95%	218	482	25	35068	478
Barry Comprehensive School	1092	1092	0	583	330	583	0	53.39%	#DIV/0!	25	60	3	4711	0
Bryn Hafren Comprehensive School	1050	0	1050	420	159	0	420	#DIV/0!	40.00%	14	32	2	2650	0
Cowbridge School	1065	576	489	650	301	433	217	75.17%	44.38%	25	66	4	4936	95
Llantwit Major School	899	454	445	531	259	289	242	63.66%	54.38%	18	50	2	4019	0
St Cyres Comprehensive School	1120	597	523	588	384	286	302	47.91%	57.74%	38	81	2	5737	148
St Richard Gwyn R.C High School	629	253	376	338	198	139	199	54.94%	52.93%	38	65	2	3685	124

School Year End Performance 2010-11

School	Children In School	Boys in School	Girls in School	No of participants in 5x60	No participating 5 or more	Boys attending 1 session	Girls attending 1 session	% Boys participating in 5x60	% Girls participating in 5x60	Participants attending 30 sessions or more	Participants attending 20 sessions or more	Participants attending 50 sessions or more	Total School Attendances	SEN Participants
Stanwell School	1518	767	751	722	352	280	442	36.51%	58.85%	39	78	8	5548	61
Ysgol Bro Morgannwg	690	350	340	418	261	255	163	72.86%	47.94%	21	50	2	3782	50
Wrexham LEA	7095	3688	3407	3301	2120	1930	1371	52.33%	40.24%	191	453	26	32583	2692
Darland High School	588	349	239	291	226	160	131	45.85%	54.81%	30	70	4	3739	126
St Josephs' Catholic High School	673	331	342	349	187	168	181	50.76%	52.92%	2	11	0	2355	15
The maelor	650	345	305	275	128	165	110	47.83%	36.07%	2	25	0	1794	8
Ysgol Bryn Alyn	749	376	373	270	189	174	96	46.28%	25.74%	18	42	0	2831	18
Ysgol Clywedog	798	393	405	409	237	273	136	69.47%	33.58%	24	49	6	3900	22
Ysgol Morgan Llywd	666	335	331	305	163	171	134	51.04%	40.48%	9	22	5	2397	17
Ysgol Rhiwabon	1198	596	602	588	440	336	252	56.38%	41.86%	54	98	0	6608	0
Ysgol Rhosnesni	1096	587	509	388	247	232	156	39.52%	30.65%	12	42	1	3620	24
Ysgol-Y-Grango	453	217	236	290	197	148	142	68.20%	60.17%	15	44	0	2899	22
St Christopher's School	224	159	65	136	106	103	33	64.78%	50.77%	25	50	10	2440	2440
Grand Total	168952	85822	82855	92109	56110	49095	40854	57.21%	49.31%	8719	16583	2913	1049499	12863

School Retention Analysis 2010-11

Year	2011				
School	Values				
	% children attending 1 session	% children attending 5 or more sessions	% children attending 20 or more sessions	% children attending 30 or more sessions	% children attending 50 sessions or more
Anglesey LEA	73.21%	56.63%	24.37%	15.33%	6.04%
Ysgol David Hughes	86.74%	81.20%	43.15%	26.85%	9.24%
Ysgol Gyfun Llangefni	62.17%	40.00%	8.55%	5.07%	0.87%
Ysgol Syr Thomas Jones	74.26%	52.71%	26.97%	19.61%	10.33%
Ysgol Uwchradd Bodedern	80.03%	63.66%	24.02%	13.81%	5.41%
Ysgol Uwchradd Caergybi	58.16%	36.10%	12.84%	7.85%	3.93%
Blaenau Gwent LEA	56.19%	33.16%	10.05%	5.27%	1.39%
Abertillery Comprehensive School	51.26%	33.49%	10.44%	6.31%	3.10%
Brymawr School	46.14%	19.28%	2.49%	1.24%	0.37%
Ebbw Vale Comprehensive School	69.64%	49.74%	21.94%	11.22%	0.77%
Glyncoed Comprehensive School	66.45%	38.27%	9.82%	4.85%	1.02%
Tredegarr Comprehensive School	55.01%	33.62%	11.62%	5.69%	1.24%
Bridgend LEA	59.58%	42.01%	12.08%	6.14%	1.51%
Archbishop Mcgrath Catholic School	68.53%	35.31%	9.27%	3.32%	0.17%
Brynteg Comprehensive School	60.29%	46.48%	8.40%	3.78%	0.59%
Bryntirion Comprehensive School	53.97%	41.27%	20.29%	9.98%	2.49%
Cynffig Comprehensive School	69.11%	35.12%	3.74%	0.16%	0.00%
Heronbridge	75.28%	71.91%	40.45%	32.58%	11.24%
Maesteg Comprehensive School	66.99%	47.82%	14.92%	7.73%	1.63%
Ogmore Comprehensive	66.07%	45.36%	19.53%	14.20%	5.92%
Pencoed Comprehensive School	44.31%	28.41%	1.50%	0.13%	0.00%
Porthcawl Comprehensive	65.25%	52.84%	19.15%	9.84%	2.04%
Ynysawdre Comprehensive School	41.57%	29.07%	7.44%	3.65%	0.98%
Caerphilly LEA	51.46%	30.63%	9.27%	4.60%	1.40%
Bedwas High School	55.16%	38.35%	13.42%	6.78%	1.62%
Blackwood Comprehensive	64.00%	56.43%	18.98%	8.40%	1.97%
Cwmcarn High School	52.05%	24.90%	6.62%	2.38%	0.40%
Heolddu Comprehensive School	67.41%	45.63%	12.72%	7.00%	2.54%
Lewis Girls Comprehensive School	50.06%	22.79%	8.11%	4.48%	1.47%
Lewis School Pengam	52.96%	27.87%	9.33%	4.79%	1.64%
Newbridge Comprehensive	52.84%	25.65%	8.16%	3.90%	1.30%
Pontlanfraith Comprehensive School	47.30%	40.54%	11.49%	4.05%	1.01%
Rhymney Comprehensive School	40.90%	20.15%	5.13%	3.42%	1.47%
Risca Community School	69.25%	45.59%	15.70%	9.25%	1.29%
St Cenydd Comprehensive School	54.50%	26.69%	7.18%	4.25%	1.72%
St Martin Comprehensive School	51.52%	32.66%	8.53%	3.48%	1.68%
Ysgol Gyfun Cwm Rhymni	21.45%	9.00%	0.12%	0.00%	0.00%
Cardiff LEA	56.93%	31.17%	7.74%	4.16%	1.93%
Cantonian High School	68.79%	30.00%	3.62%	0.52%	0.00%
Cardiff High School	50.75%	21.23%	2.45%	0.57%	0.00%
Cathays High School	69.39%	48.81%	17.41%	9.63%	2.64%
Corpus Christi Catholic High School	37.48%	15.51%	1.19%	0.30%	0.00%

LA School Retention Rates 2010-11

School	% children attending 1 session	% children attending 5 or more sessions	% children attending 20 or more sessions	% children attending 30 or more sessions	% children attending 50 sessions or more
Fitzalan High School	56.25%	24.66%	15.07%	14.47%	12.33%
Glyn Derw High School	45.33%	29.83%	21.00%	5.50%	1.67%
Llanederyn High School	51.71%	19.21%	3.95%	2.87%	1.08%
Llanishen High School	43.24%	36.78%	12.01%	7.52%	2.43%
Llanrumney High School	54.23%	26.49%	9.73%	3.96%	1.26%
Mary Immaculate RC High School	86.40%	81.25%	7.72%	0.92%	0.00%
Michaelston Community School	62.93%	33.79%	10.86%	5.86%	3.28%
Radyr Comprehensive School	65.25%	30.61%	7.52%	4.34%	2.44%
Rumney High School	63.47%	27.36%	3.30%	1.43%	0.43%
St Illtyds R.C High School	62.73%	33.17%	4.72%	1.99%	0.12%
St Teilio's C.I.W High School	65.52%	29.74%	2.16%	0.32%	0.00%
The Bishop of Llandaff C.I.W High	49.63%	41.38%	5.19%	2.75%	0.95%
Whitchurch High School	64.21%	28.47%	7.44%	3.36%	1.34%
Willows High School	45.74%	23.00%	4.26%	2.45%	0.52%
Greenhill Special School	23.33%	23.33%	23.33%	23.33%	0.00%
Carmarthenshire LEA	45.67%	30.47%	9.80%	5.00%	1.13%
Amman Valley Comprehensive School	42.35%	27.43%	5.95%	2.26%	0.53%
Bryngwyn Comprehensive School	50.12%	40.07%	18.78%	12.32%	6.22%
Coedcae Comprehensive School	30.04%	21.86%	4.28%	1.81%	0.10%
Glan-Y-Mor Comprehensive School	57.12%	31.89%	5.05%	1.62%	0.18%
Heol Goffa Special School	66.67%	58.33%	25.00%	8.33%	0.00%
Queen Elizabeth High	30.89%	29.34%	17.52%	10.68%	1.30%
St John Lloyd Catholic Comprehensive	47.82%	26.19%	10.44%	5.69%	1.14%
Ysgol Gyfun Bro Myrddin	39.97%	37.79%	14.10%	6.54%	0.15%
Ysgol Gyfun Dyffryn Taf	48.30%	20.56%	1.22%	0.36%	0.00%
Ysgol Gyfun Emlyn	48.10%	27.74%	7.19%	2.99%	1.20%
Ysgol Gyfun Maes Yr yfa	49.62%	32.16%	10.87%	4.59%	0.92%
Ysgol Gyfun Pantycelyn	74.29%	54.69%	20.00%	11.43%	1.22%
Ysgol Gyfun Tregib	51.13%	36.56%	11.81%	5.65%	1.13%
Ysgol Gyfun Y Strade	56.19%	24.03%	1.33%	0.24%	0.00%
Ysgol Y Gwendraeth	63.21%	47.83%	21.40%	9.03%	3.01%
Ceredigion LEA	51.49%	31.18%	7.96%	3.76%	1.17%
Cardigan County Secondary	52.58%	32.36%	9.89%	4.72%	0.00%
Penglais Comprehensive School	49.45%	30.27%	3.60%	0.90%	0.30%
Ysgol Gyfun Aberaeron	38.94%	23.72%	6.90%	3.72%	1.59%
Ysgol Gyfun Dyffryn Teifi	55.31%	35.62%	6.42%	2.88%	0.22%
Ysgol Gyfun Llanbedr-Pont-Steffan	51.03%	28.94%	12.67%	5.99%	1.71%
Ysgol Gyfun Penweddig	56.19%	32.96%	4.65%	0.88%	0.00%
Ysgol Uwchradd Tregaron	72.06%	43.72%	22.27%	15.38%	8.50%
Conwy LEA	58.54%	25.84%	7.10%	3.66%	1.05%
Eirias High School	80.08%	11.53%	3.95%	3.23%	1.69%
Ysgol Aberconwy	43.80%	20.82%	4.21%	2.84%	0.11%
Ysgol Bryn Elian	58.02%	35.96%	11.42%	6.17%	1.85%
Ysgol Dyffryn Conwy	58.28%	30.84%	5.52%	0.16%	0.00%
Ysgol Emrys Ap Iwan	42.79%	21.85%	3.86%	1.47%	0.28%
Ysgol John Bright	52.77%	26.39%	10.58%	4.82%	1.36%
Ysgol Y Creuddyn	71.74%	46.53%	10.66%	5.41%	1.02%
Ysgol Y Gogarth	78.05%	75.61%	40.24%	28.05%	9.76%

LA School Retention Rates 2010-11

School	% children attending 1 session	% children attending 5 or more sessions	% children attending 20 or more sessions	% children attending 30 or more sessions	% children attending 50 sessions or more
Denbighshire LEA	67.13%	34.87%	8.29%	3.73%	1.22%
Blessed Edward Jones RC School	61.04%	20.68%	6.22%	3.82%	1.61%
Denbigh High School	49.38%	32.87%	9.88%	5.86%	2.78%
Prestatyn High School	83.41%	36.81%	8.75%	2.59%	1.05%
Rhyl High School	57.76%	19.98%	3.62%	0.83%	0.21%
St Brigids School	84.51%	45.77%	11.97%	6.69%	0.35%
Ysgol Brynhyfryd	62.99%	45.57%	6.99%	2.66%	0.49%
Ysgol Dinas Bran	58.91%	32.54%	9.50%	5.58%	1.78%
Ysgol Uwchradd Glan Clwyd	75.25%	44.78%	12.19%	5.85%	1.87%
Flintshire LEA	59.23%	42.75%	10.29%	4.96%	1.54%
Argoed High School	75.73%	53.70%	20.14%	4.30%	0.34%
Castell Alun High School	80.23%	33.77%	6.24%	2.37%	0.28%
Connah's Quay High School	81.88%	69.42%	6.23%	4.19%	2.38%
Elfed High	65.91%	60.03%	20.07%	10.28%	3.92%
Flint High School	57.05%	48.26%	30.35%	21.56%	8.79%
Hawarden High School	50.42%	20.84%	8.32%	4.21%	0.32%
Holywell High School	51.98%	45.27%	14.46%	7.57%	1.72%
Mold Alun High School	37.20%	35.64%	3.13%	0.82%	0.33%
St Richard Gwyn Roman Catholic High	51.42%	39.68%	5.07%	1.11%	0.00%
Ysgol Maes Garmon	40.55%	34.66%	2.73%	0.42%	0.00%
Gwynedd LEA	72.43%	52.30%	21.67%	12.93%	5.98%
Ysgol Ardudwy	81.29%	60.65%	24.19%	13.23%	3.55%
Ysgol Botwnnog	77.55%	69.23%	36.17%	22.66%	8.94%
Ysgol Brynrefail	63.55%	34.58%	7.32%	2.96%	0.62%
Ysgol Dyffryn Nantle	82.68%	64.67%	21.94%	9.70%	2.31%
Ysgol Dyffryn Ogwen	92.33%	78.27%	29.39%	17.57%	6.71%
Ysgol Eifionydd	70.58%	46.46%	15.93%	7.96%	1.11%
Ysgol Friars	43.94%	24.43%	7.20%	2.84%	0.66%
Ysgol Glan Y Mor	82.07%	69.20%	36.84%	26.90%	15.20%
Ysgol Syr Hugh Owen	76.47%	60.59%	19.26%	10.00%	2.79%
Ysgol Tryfan	67.88%	45.01%	13.87%	4.38%	0.49%
Ysgol Uwchradd Tywyn	99.08%	81.90%	64.72%	53.99%	41.41%
Ysgol Y Berwyn	93.29%	84.35%	44.09%	30.35%	18.85%
Ysgol Y Gader	82.10%	53.20%	20.97%	9.21%	1.28%
Ysgol Y Moelwyn	62.05%	21.28%	3.85%	1.28%	0.51%
Merthyr Tydfil LEA	54.22%	34.98%	7.70%	3.66%	0.55%
Afon Taf High School	48.89%	30.97%	8.96%	3.21%	0.00%
Bishop Hedley High School	84.14%	57.24%	10.00%	5.86%	1.03%
Cyfartha High School	37.35%	27.18%	5.94%	2.25%	0.45%
Pen-Y-Dre High School	63.71%	34.00%	6.89%	4.75%	1.07%
Monmouthshire LEA	42.69%	25.94%	10.54%	5.46%	1.30%
Caldicot Comprehensive	43.96%	14.16%	3.56%	2.15%	0.58%
Chepstow Comprehensive	62.83%	50.65%	21.47%	14.53%	4.71%
King Henry VIII Comprehensive School	32.43%	30.18%	17.79%	7.21%	1.01%
Monmouth Comprehensive School	36.65%	19.44%	5.63%	2.01%	0.15%
Neath Port Talbot LEA	46.95%	27.76%	9.28%	4.72%	1.29%
Cefn Saeson Comprehensive School	41.25%	32.00%	10.25%	4.25%	0.50%
Cwmtawe Comprehensive School	45.38%	24.52%	8.28%	4.62%	1.75%

LA School Retention Rates 2010-11

School	% children attending 1 session	% children attending 5 or more sessions	% children attending 20 or more sessions	% children attending 30 or more sessions	% children attending 50 sessions or more
Cwrt Sart Comprehensive School	57.34%	45.37%	17.95%	10.04%	1.93%
Cymer Afan Comprehensive School	62.63%	39.39%	16.16%	7.41%	1.35%
Dwr-Y-Felin Comprehensive School	10.74%	7.67%	0.17%	0.00%	0.00%
Dyffryn Afan Comprehensive School	48.03%	26.48%	8.13%	4.06%	2.46%
Glan Afan Comprehensive	57.20%	37.92%	13.14%	5.30%	1.27%
Llangatwg Comprehensive School	68.44%	32.57%	6.34%	2.41%	0.13%
Sandfields Comprehensive School	61.41%	45.66%	18.17%	11.41%	4.34%
St Joseph's Catholic School	44.89%	0.84%	8.38%	2.85%	0.00%
Ysgol Gyfun Ystalyfera	57.44%	38.87%	10.58%	6.64%	1.35%
Newport LEA	32.63%	17.76%	2.85%	1.21%	0.40%
Basseleg school	28.56%	20.89%	0.00%	0.00%	0.00%
Duffryn High School	13.60%	7.46%	1.89%	0.19%	0.00%
Hartridge High School	62.64%	16.95%	6.61%	3.02%	0.72%
Lliswerry High School	29.86%	23.64%	13.35%	8.14%	3.17%
Newport High School	44.02%	24.23%	0.41%	0.10%	0.00%
St Julians' Comprehensive School	49.58%	27.85%	1.66%	0.08%	0.00%
Caerleon Comprehensive School	28.96%	16.23%	2.06%	0.30%	0.00%
St Josephs RC High School	12.66%	5.65%	0.00%	0.00%	0.00%
Pembrokeshire LEA	69.87%	45.09%	15.81%	8.42%	2.56%
Milford Haven School	55.15%	39.14%	10.42%	2.74%	1.32%
Sir Thomas Picton School	61.83%	43.05%	12.18%	6.90%	2.64%
Tasker-Milward V.C School	53.38%	43.30%	19.93%	10.41%	2.55%
The Greenhill School	96.17%	57.21%	22.28%	13.25%	4.32%
Ysgol Bro Gwaun	58.48%	34.48%	14.67%	7.05%	2.29%
Ysgol Dewi Sant	79.52%	58.10%	21.90%	12.62%	3.81%
Ysgol Gyfun Ddwyeithog Y Preseli	64.68%	41.14%	11.13%	4.92%	0.13%
Ysgol Penfro	79.33%	40.42%	13.56%	8.28%	2.76%
Powys LEA	58.10%	35.12%	10.37%	5.54%	1.90%
Brecon High School	38.20%	28.89%	9.15%	5.14%	1.61%
Builth Wells High School	63.31%	31.85%	7.66%	3.43%	0.20%
Caereinion High School	73.62%	47.25%	15.18%	6.83%	1.52%
Crickhowell High School	58.79%	30.86%	2.24%	0.00%	0.00%
Gwernyfed High School	62.28%	35.56%	9.05%	4.96%	1.72%
John Beddoes School	68.68%	74.21%	42.11%	33.95%	17.37%
Llandrindod High School	59.88%	37.21%	16.47%	8.33%	3.10%
Llanfyllin High School	60.05%	40.62%	10.12%	5.67%	1.35%
Llanidloes High School	53.48%	29.27%	5.23%	1.92%	0.00%
Newtown High School	39.54%	19.17%	2.95%	0.67%	0.13%
Welshpool High School	57.93%	23.38%	3.55%	1.36%	0.10%
Ysgol Bro Ddyfi	69.87%	42.63%	7.37%	3.53%	0.32%
Ysgol Maes-Y- Dderwen	64.30%	38.71%	16.34%	7.74%	3.01%
Brynllwarch Hall School	79.07%	55.81%	23.26%	0.00%	0.00%
Ysgol Cedewain	71.05%	65.79%	42.11%	28.95%	18.42%
Ysgol Penmaes	88.46%	69.23%	34.62%	13.46%	0.00%
Rhondda Cynon Taff LEA	56.87%	39.79%	15.05%	8.91%	3.75%
Aberdare Boys school	47.03%	27.08%	6.89%	3.09%	0.24%
Aberdare Girls' Comprehensive School	41.51%	41.30%	19.08%	14.88%	9.43%
Blaengwawr Comprehensive School	49.56%	26.19%	3.51%	1.41%	0.35%

LA School Retention Rates 2010-11

School	% children attending 1 session	% children attending 5 or more sessions	% children attending 20 or more sessions	% children attending 30 or more sessions	% children attending 50 sessions or more
Bryncelynnog Comprehensive School	60.81%	50.93%	24.26%	15.37%	5.27%
Cardinal Newman RC Comprehensive School	55.07%	37.10%	9.82%	2.16%	0.67%
Ferndale Community School	71.84%	48.38%	22.56%	14.26%	9.21%
Hawthorn High School	61.98%	32.33%	12.44%	7.56%	2.21%
Mountain Ash Comprehensive School	55.75%	31.46%	7.67%	3.84%	1.02%
Pontypridd High School	44.97%	22.96%	3.31%	0.59%	0.12%
St John Baptist C.I.W High School	45.58%	42.86%	19.87%	11.82%	4.16%
Tonypandy Comprehensive School	67.86%	49.45%	20.05%	12.09%	3.57%
Tonyrefail Comprehensive School	66.44%	50.17%	20.07%	13.94%	9.92%
Treorchy Comprehensive School	60.79%	44.52%	18.12%	9.10%	2.17%
Y Pant Comprehensive School	67.12%	52.49%	23.90%	13.95%	9.37%
Ysgol Gyfun Cymer Rhondda	60.24%	40.37%	17.89%	12.54%	1.99%
Ysgol Gyfun Llanhari	79.96%	61.32%	24.45%	16.23%	2.81%
Ysgol Gyfun Rhydywaun	60.54%	32.01%	6.43%	3.21%	1.93%
Ysgol Ty Coch	68.42%	61.40%	38.60%	28.07%	15.79%
Garth Olwg	14.10%	13.80%	1.32%	0.15%	0.00%
Swansea LEA	47.50%	25.40%	7.23%	3.44%	1.16%
Birchgrove Comprehensive School	54.22%	24.90%	4.55%	2.54%	0.40%
Bishop Gore School	47.18%	27.85%	9.06%	4.31%	2.21%
Bishop Vaughan RC School	33.61%	14.79%	4.57%	2.56%	1.10%
Bishopston Comprehensive School	30.02%	19.33%	2.14%	0.28%	0.00%
Cefn Hengoed Community School	70.29%	51.43%	20.66%	8.60%	2.87%
Daniel James Community School	61.12%	18.74%	2.34%	1.17%	0.94%
Dylan Thomas Community School	55.35%	34.80%	12.39%	5.09%	3.23%
Gowerton School	52.39%	25.48%	5.82%	3.63%	1.53%
Morrison Comprehensive School	59.54%	26.36%	5.90%	3.58%	1.85%
Olchfa School	35.83%	14.84%	2.05%	0.71%	0.16%
Pentrefafod	38.95%	23.84%	9.25%	4.32%	0.82%
Penybryn Special School	77.00%	73.00%	35.00%	19.00%	10.00%
Penyrheol Comprehensive School	64.46%	24.17%	6.29%	3.09%	1.55%
Pontarddulais Comprehensive School	29.08%	17.47%	3.44%	1.02%	0.00%
Ysgol Gyfun Bryn Tawe	43.97%	28.17%	15.02%	8.29%	0.31%
Ysgol Gyfun Gwyr	66.15%	46.73%	11.35%	4.81%	0.19%
Torfaen LEA	56.00%	26.22%	3.24%	1.49%	0.30%
Abersychan Comprehensive School	56.65%	27.22%	1.90%	0.63%	0.00%
Croesyceiliog School	58.81%	20.48%	3.17%	2.19%	0.60%
Fairwater School	59.75%	30.22%	6.46%	3.43%	0.55%
Llantarnam School	45.68%	25.54%	4.05%	1.53%	0.27%
St Alban's RC High School	60.24%	29.27%	3.54%	0.79%	0.00%
West Monmouth Comprehensive School	57.26%	27.78%	3.42%	1.71%	0.53%
Ysgol Gyfun Gwynllyw	55.98%	27.07%	0.49%	0.00%	0.00%
Vale of Glamorgan LEA	52.71%	27.83%	5.98%	2.70%	0.31%
Barry Comprehensive School	53.39%	30.22%	5.49%	2.29%	0.27%
Bryn Hafren Comprehensive School	40.00%	15.14%	3.05%	1.33%	0.19%
Cowbridge School	61.03%	28.26%	6.20%	2.35%	0.38%
Llantwit Major School	59.07%	28.81%	5.56%	2.00%	0.22%
St Cyres Comprehensive School	52.50%	34.29%	7.23%	3.39%	0.18%
St Richard Gwyn R.C High School	53.74%	31.48%	10.33%	6.04%	0.32%

LA School Retention Rates 2010-11

School	% children attending 1 session	% children attending 5 or more sessions	% children attending 20 or more sessions	% children attending 30 or more sessions	% children attending 50 sessions or more
Stanwell School	47.56%	23.19%	5.14%	2.57%	0.53%
Ysgol Bro Morgannwg	60.58%	37.83%	7.25%	3.04%	0.29%
Wrexham LEA	46.53%	29.88%	6.38%	2.69%	0.37%
Darland High School	49.49%	38.44%	11.90%	5.10%	0.68%
St Josephs' Catholic High School	51.86%	27.79%	1.63%	0.30%	0.00%
The maelor	42.31%	19.69%	3.85%	0.31%	0.00%
Ysgol Bryn Alyn	36.05%	25.23%	5.61%	2.40%	0.00%
Ysgol Clywedog	51.25%	29.70%	6.14%	3.01%	0.75%
Ysgol Morgan Llywd	45.80%	24.47%	3.30%	1.35%	0.75%
Ysgol Rhiwabon	49.08%	36.73%	8.18%	4.51%	0.00%
Ysgol Rhosnesni	35.40%	22.54%	3.83%	1.09%	0.09%
Ysgol-Y-Grango	64.02%	43.49%	9.71%	3.31%	0.00%
St Christopher's School	60.71%	47.32%	22.32%	11.16%	4.46%
Grand Total	54.52%	33.21%	9.82%	5.16%	1.72%

5x60 Participation Analysis

% of children participating in 5x60

% children attending 1 sess	Year				
	2007	2008	2009	2010	2011
Anglesey LEA	33.68%	48.44%	70.09%	69.92%	73.21%
Blaenau Gwent LEA	31.23%	31.05%	47.20%	63.50%	56.19%
Bridgend LEA	47.89%	46.94%	58.79%	66.25%	59.58%
Caerphilly LEA	26.72%	36.79%	45.18%	48.09%	51.46%
Cardiff LEA	25.56%	35.29%	48.03%	48.10%	56.93%
Carmarthenshire LEA	19.54%	39.96%	44.86%	45.14%	45.67%
Ceredigion LEA	25.11%	32.15%	45.11%	51.50%	51.49%
Conwy LEA	20.06%	29.95%	38.34%	41.82%	58.54%
Denbighshire LEA	17.17%	56.55%	63.33%	55.61%	67.13%
Flintshire LEA	21.02%	31.92%	48.13%	60.92%	59.23%
Gwynedd LEA	42.64%	55.33%	66.12%	66.14%	72.43%
Merthyr Tydfil LEA	62.38%	37.22%	43.25%	45.62%	54.22%
Monmouthshire LEA	#DIV/0!	41.89%	44.84%	35.20%	42.69%
Neath Port Talbot LEA	34.22%	37.91%	43.10%	46.21%	46.95%
Newport LEA	10.98%	32.16%	52.28%	47.25%	32.63%
Pembrokeshire LEA	35.36%	36.04%	53.23%	43.94%	69.87%
Powys LEA	18.01%	45.41%	53.20%	56.84%	58.10%
Rhondda Cynon Taff LEA	31.37%	50.62%	60.09%	61.41%	56.87%
Swansea LEA	42.87%	27.46%	41.34%	38.66%	47.50%
Torfaen LEA	23.92%	28.44%	47.56%	55.71%	56.00%
Vale of Glamorgan LEA	48.77%	48.35%	35.13%	43.35%	52.71%
Wrexham LEA	25.22%	35.39%	44.53%	40.00%	46.53%
Grand Total	31.21%	39.26%	49.18%	50.87%	54.52%

% of children participating 5 times or more

% children attending 5 or more sessions	Year				
	2007	2008	2009	2010	2011
Anglesey LEA	9.96%	24.78%	51.23%	51.36%	56.63%
Blaenau Gwent LEA	15.88%	17.27%	26.23%	37.94%	33.16%
Bridgend LEA	18.64%	31.39%	41.88%	45.50%	42.01%
Caerphilly LEA	12.69%	18.25%	24.35%	27.82%	30.63%
Cardiff LEA	14.01%	19.83%	25.42%	26.48%	31.17%
Carmarthenshire LEA	12.37%	22.00%	22.16%	27.41%	30.47%
Ceredigion LEA	1.98%	14.15%	25.03%	30.55%	31.18%
Conwy LEA	8.31%	13.78%	18.43%	25.58%	25.84%
Denbighshire LEA	8.50%	26.27%	28.98%	37.90%	34.87%
Flintshire LEA	4.87%	16.88%	33.83%	42.26%	42.75%
Gwynedd LEA	28.93%	33.22%	40.51%	45.78%	52.30%
Merthyr Tydfil LEA	59.22%	17.24%	31.28%	35.59%	34.98%
Monmouthshire LEA	#DIV/0!	24.82%	27.04%	20.80%	25.94%
Neath Port Talbot LEA	11.61%	23.10%	26.74%	32.30%	27.76%
Newport LEA	4.95%	17.69%	23.99%	25.00%	17.76%
Pembrokeshire LEA	30.43%	15.66%	32.77%	31.52%	45.09%
Powys LEA	2.30%	19.21%	27.60%	35.18%	35.12%
Rhondda Cynon Taff LEA	15.06%	24.73%	38.03%	42.38%	39.79%
Swansea LEA	16.07%	9.87%	19.45%	22.80%	25.40%
Torfaen LEA	8.01%	11.07%	23.84%	25.91%	26.22%
Vale of Glamorgan LEA	12.98%	17.03%	16.99%	20.85%	27.83%
Wrexham LEA	6.96%	17.67%	24.99%	23.47%	29.88%
Grand Total	14.11%	19.94%	27.93%	31.77%	33.21%

% of children participating in 5x60 by Year

LA	(All)
----	-------

Year	% children attending 1 session
2007	31.21%
2008	39.26%
2009	49.18%
2010	50.87%
2011	54.52%

% of children participating 5 times or more by Year

LA	(All)
----	-------

Year	% of children attending 5 or more sessions by Year
2007	14.11%
2008	19.94%
2009	27.93%
2010	31.77%
2011	33.21%

5x60 Training Analysis 2010-11

Term	(Multiple Items)									
Course	Values							Males	Females	Total Attendees
	HE FE Students	Older Pupils	Other Club Personnel	PE Teacher	Qualified Coach or Instructor	Teacher Non PE				
AYP Organisers Course	19	72	4	1	10	2	732	564	1296	
Badminton leaders award	19	38	0	2	15	1	88	51	139	
Basketball Level 1	6	15	0	2	12	3	51	10	61	
British Gymnastics Assistant Coach		1					0	3	3	
Cheerleading Workshop		5		1	1	2	0	14	14	
Coaching Disabled Performers	3	1	5		3		2	11	13	
Dance Leaders	7	21	2	2	5	1	5	105	110	
Exercise to Music Fitness Wales	1							2	2	
First Aid	4	14	0	1	4	1	83	66	149	
Football Leaders Award	14	39	4	1	8	6	95	36	131	
Hockey Leaders Award	2	11	2	0	1	1	8	42	50	
Netball Starting Out	12	39	8	2	2	0	1	160	161	
Netball UKCC Level 1		1				2		17	17	
Orienteering leaders award	2	4	0	0	0	0	32	27	59	
Q Award	7	19	12	2	1	0	0	114	114	
Rugby Level 1 Coaching Course	3	3	2	1	1	2	10	0	10	
Rugby Umpiring Award	1					1	19	0	19	
Sports Leaders Level 1 (JSLA)	8	14	1	6	6	0	166	105	271	
Sports Leaders Level 2 (CSLA)	4	16	1	1	8	0	137	110	247	
Sports leaders tutor course	1	1	0	1	0	1	1	2	3	
Table Tennis Award	1	4		1	1		6	3	9	
Tag Rugby Award	8	31	5	0	5	3	110	24	134	
Tag Rugby Community Leaders		4			1		9	5	14	
UKCC Safeguarding and Protecting Children	3	8	0	1	0	0	9	8	17	
Walking the Way to Health						2		2	2	
Other	56	114	27	31	74	21	389	270	659	
Grand Total	181	475	73	56	158	49	1953	1751	3704	

5x60 Training Totals

Term	(Multiple Items)
Course	Total Attendees
AYP Organisers Course	1296
Badminton leaders award	139
Basketball Level 1	61
British Gymnastics Assistant Coach	3
Cheerleading Workshop	14
Coaching Disabled Performers	13
Dance Leaders	110
Exercise to Music Fitness Wales	2
First Aid	149
Football Leaders Award	131
Hockey Leaders Award	50
Netball Starting Out	161
Netball UKCC Level 1	17
Orienteering leaders award	59
Q Award	114
Rugby Level 1 Coaching Course	10
Rugby Umpiring Award	19
Sports Leaders Level 1 (JSLA)	271
Sports Leaders Level 2 (CSLA)	247
Sports leaders tutor course	3
Table Tennis Award	9
Tag Rugby Award	134
Tag Rugby Community Leaders	14
UKCC Safeguarding and Protecting Children	17
Walking the Way to Health	2
Other	659
Grand Total	3704